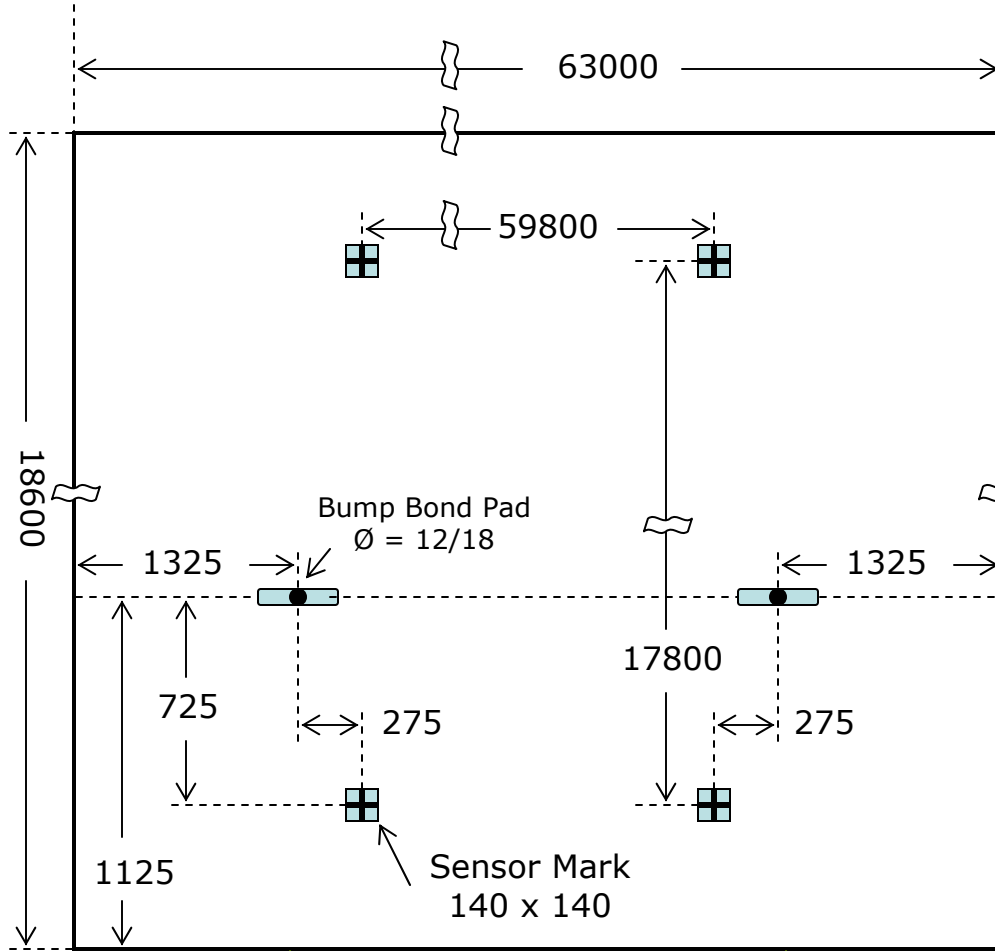


Sensor Coordinates



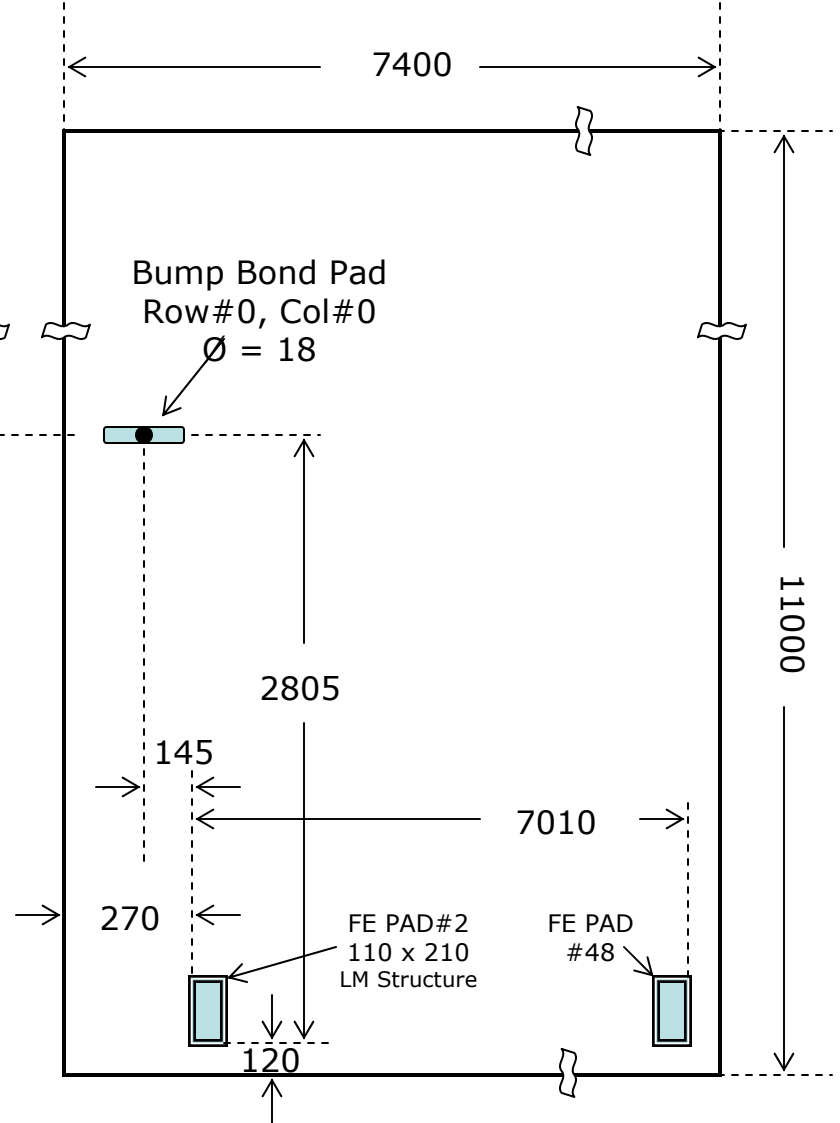
FE Chip#8
Col#0

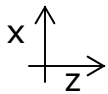
FE Chip#F
Col 17



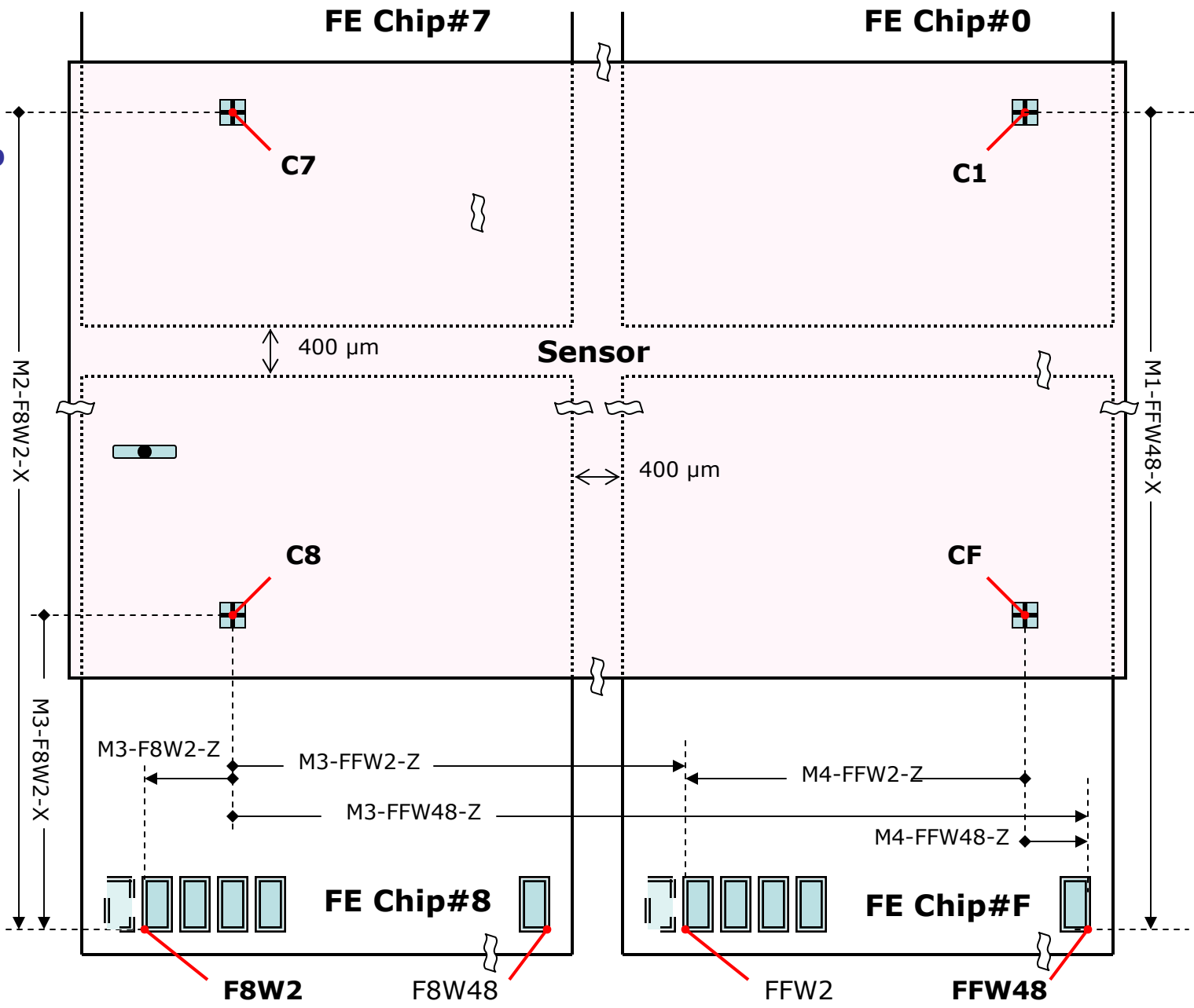
Seen from Top

FE Chip Coordinates

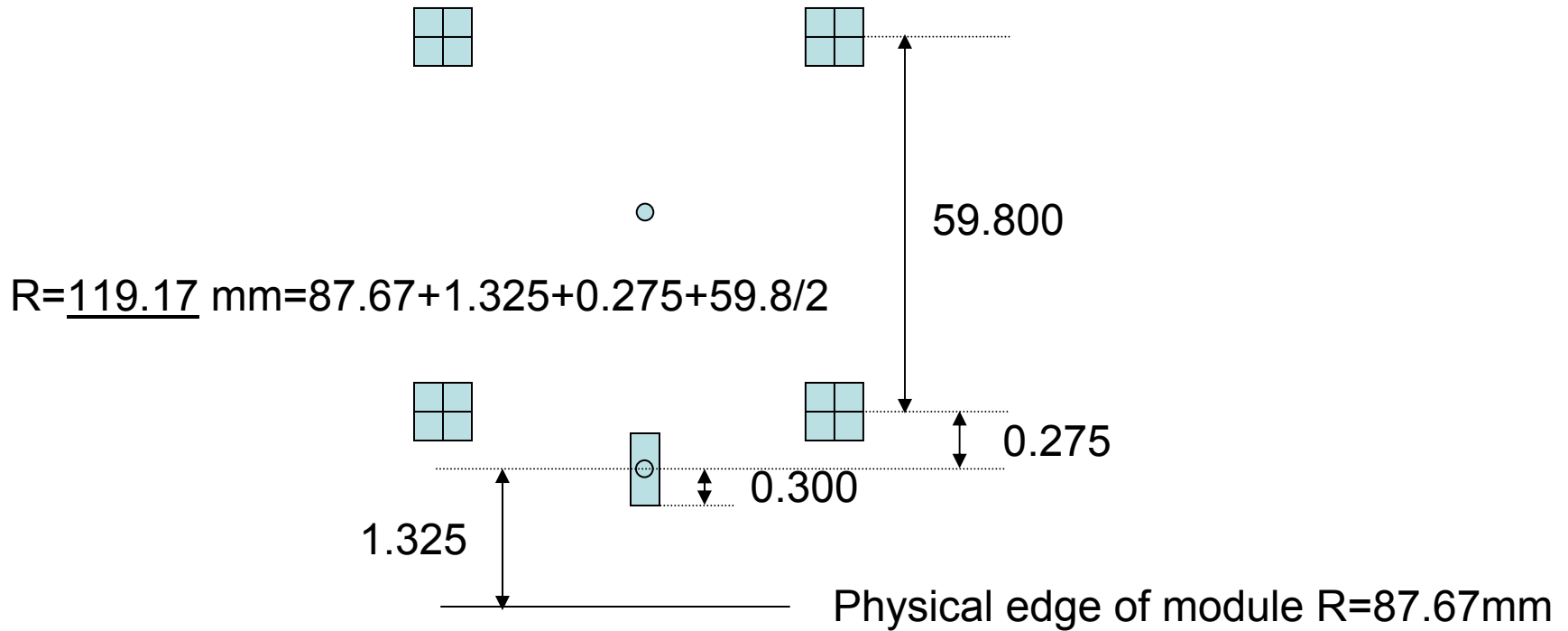


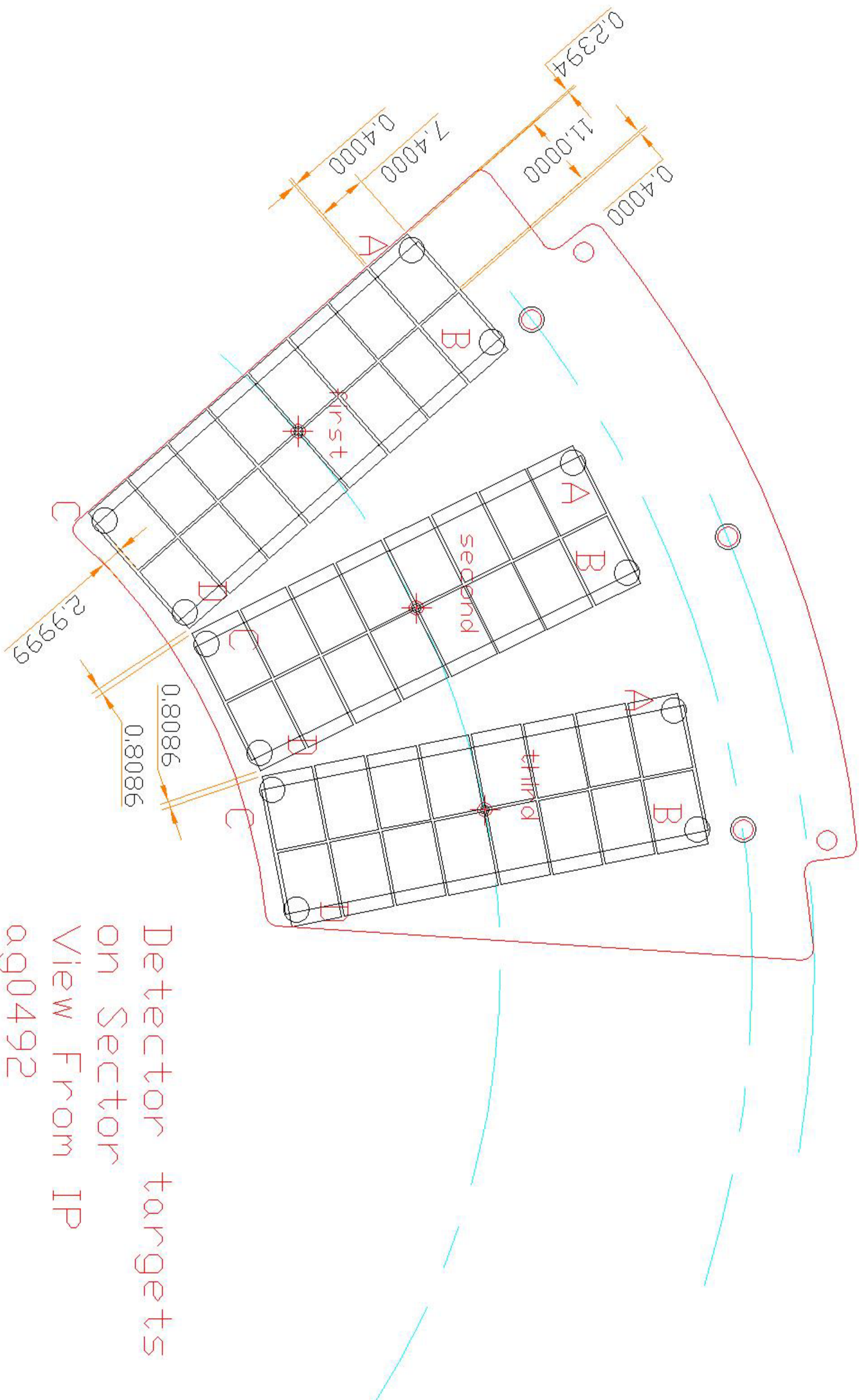


Seen from Top
(Sensor Side)



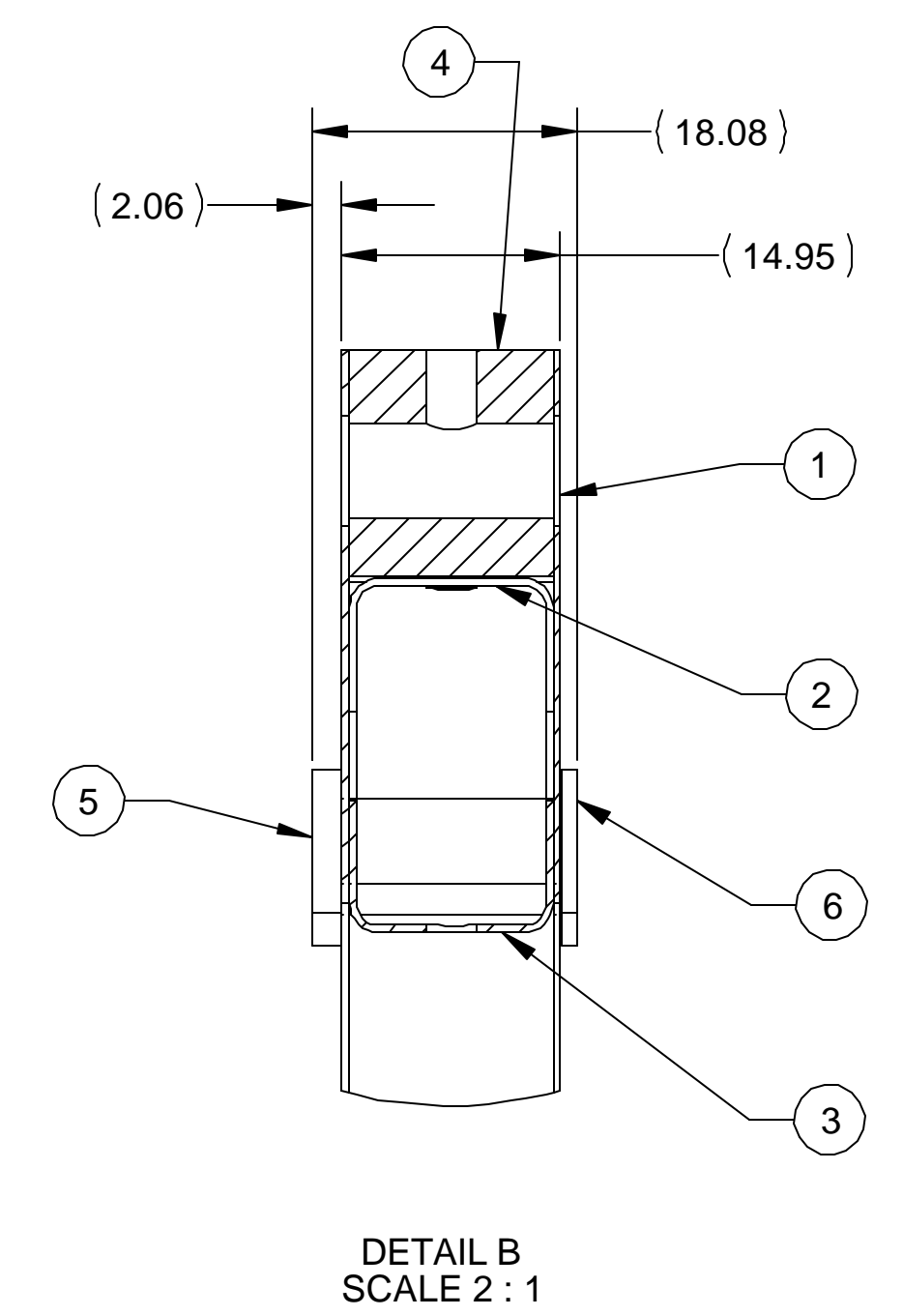
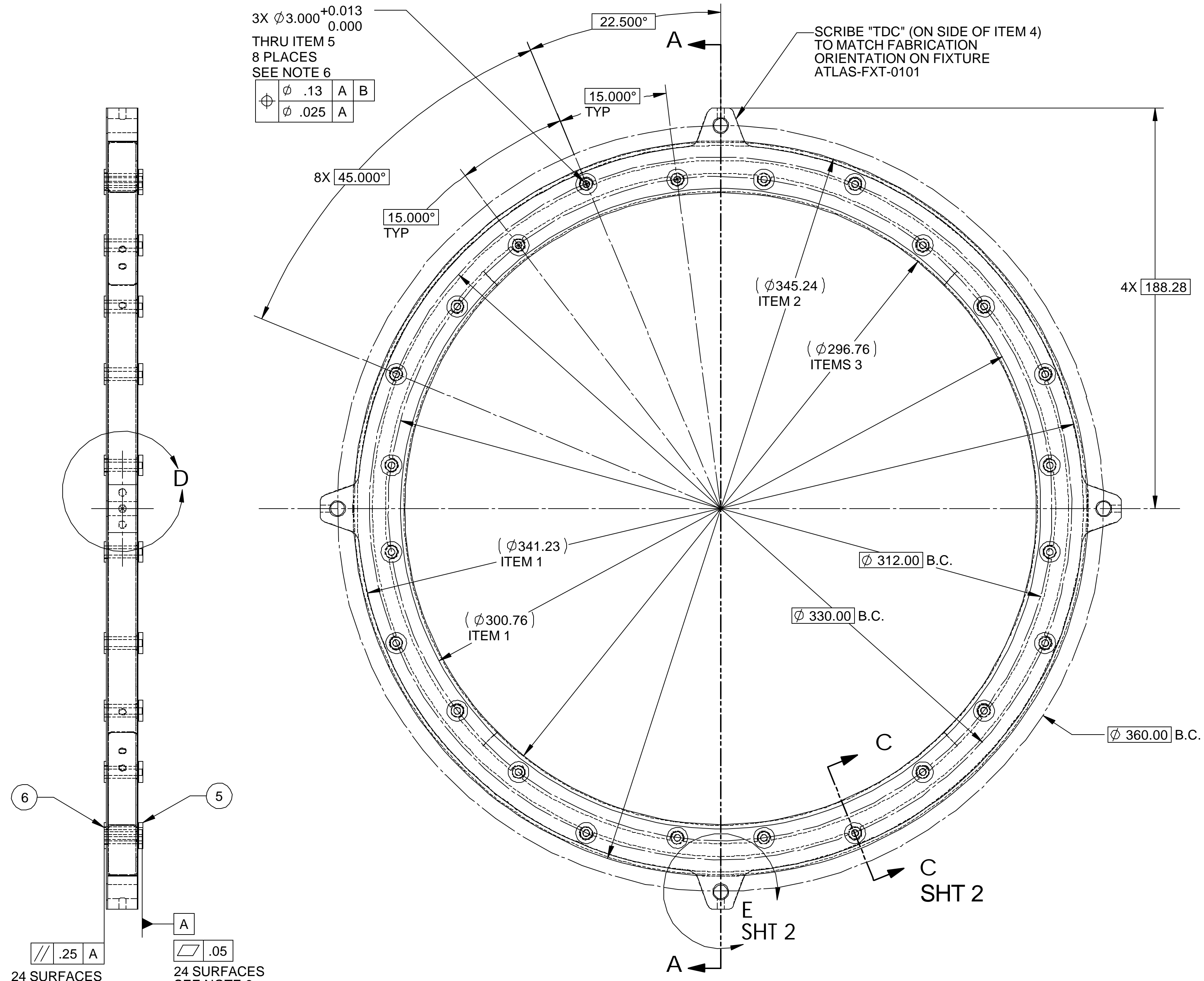
Radial Center of Module





Detector targets
 on Sector
 View From IP
 ag0492

ITEM	PART NO.	REQD	DESCRIPTION	MATERIAL
6	21F526	24	RING WASHER	3-D CARBON-CARBON
5	21F526	24	RING BUSHING	3-D CARBON-CARBON
4	21F526	2	RING MOUNT TAB	3-D CARBON-CARBON
3	21F526	4	RING INNER C CHANNEL	C-C WOVEN FABRIC
2	21F524	4	RING OUTER C CHANNEL	C-C WOVEN FABRIC
1	21F523	4	SECTOR MOUNT FACESHEET	C-C LAMINATE

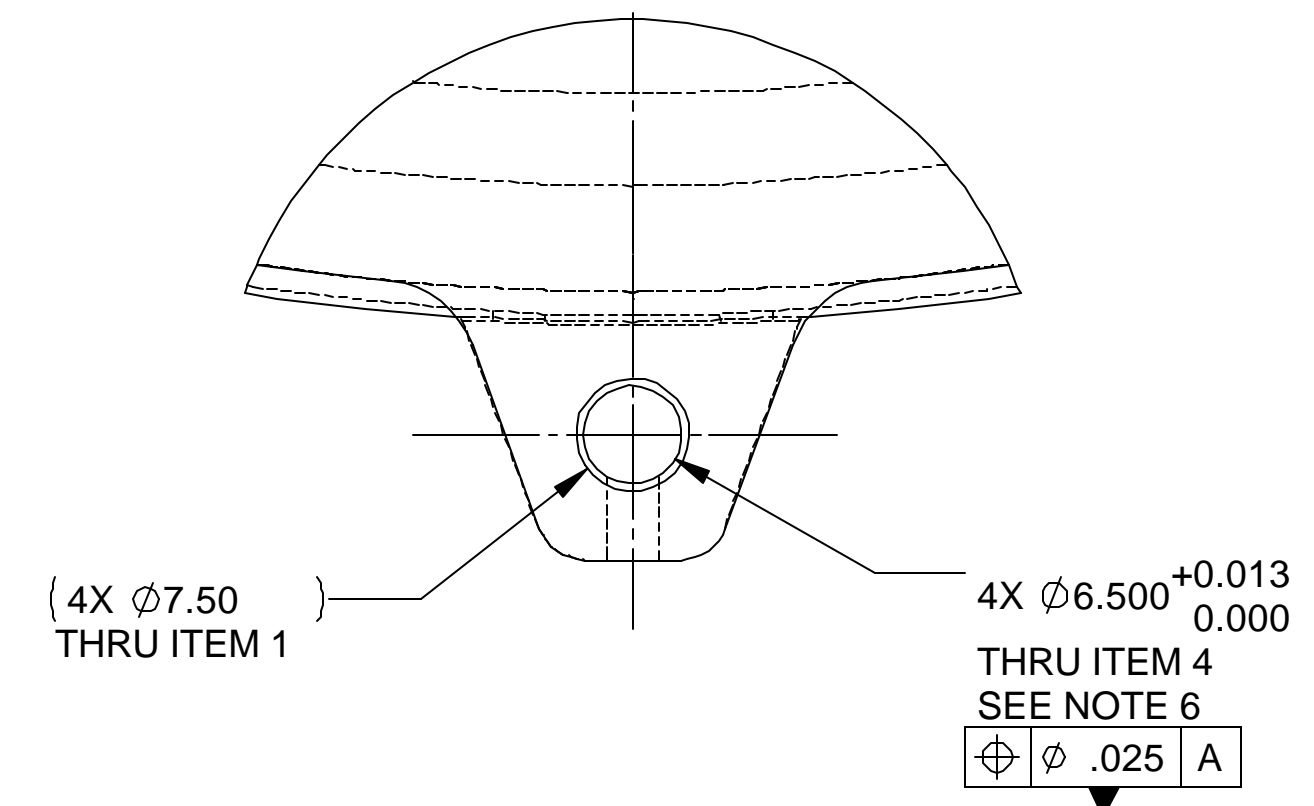
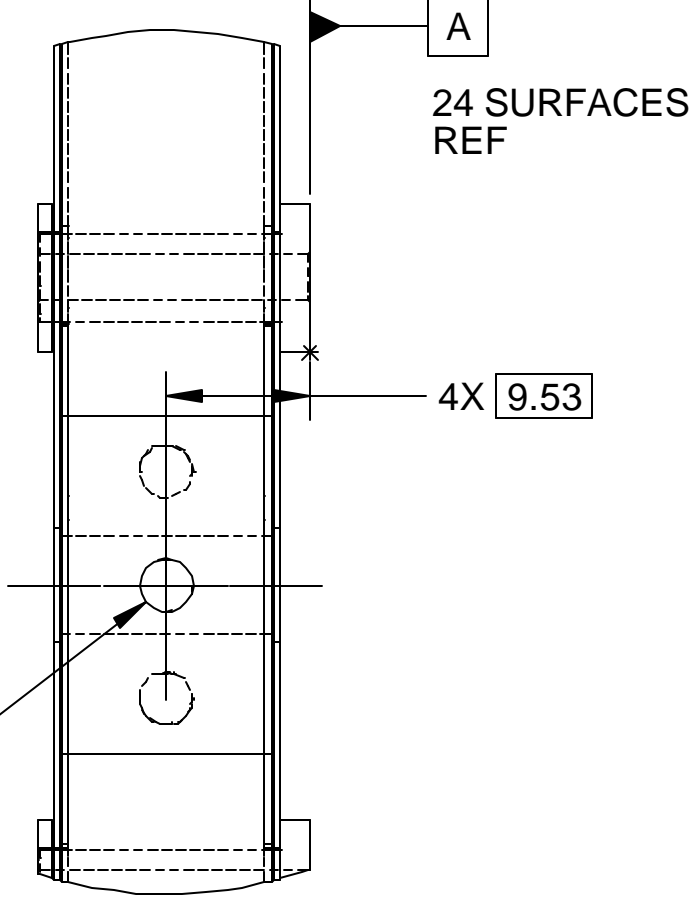
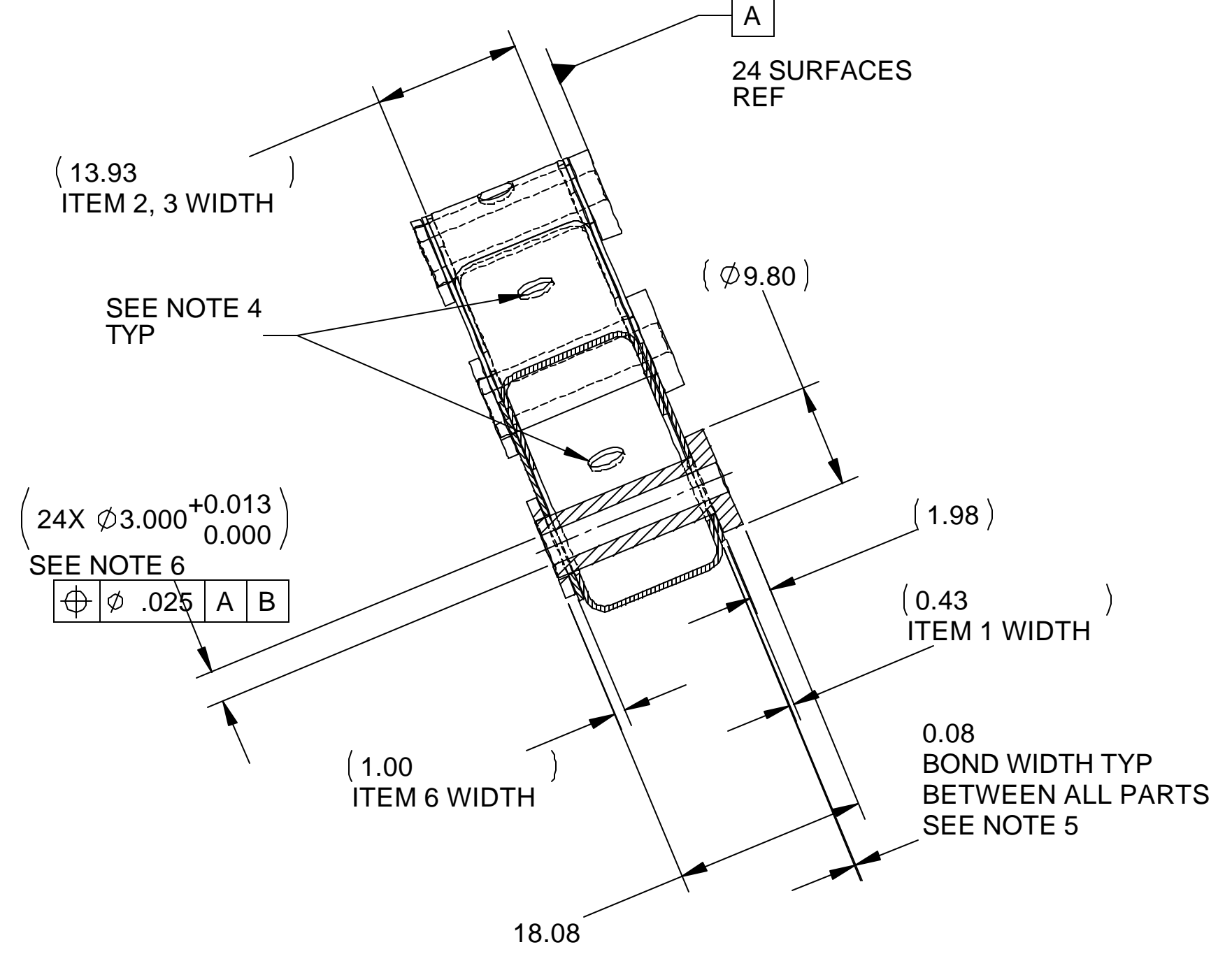
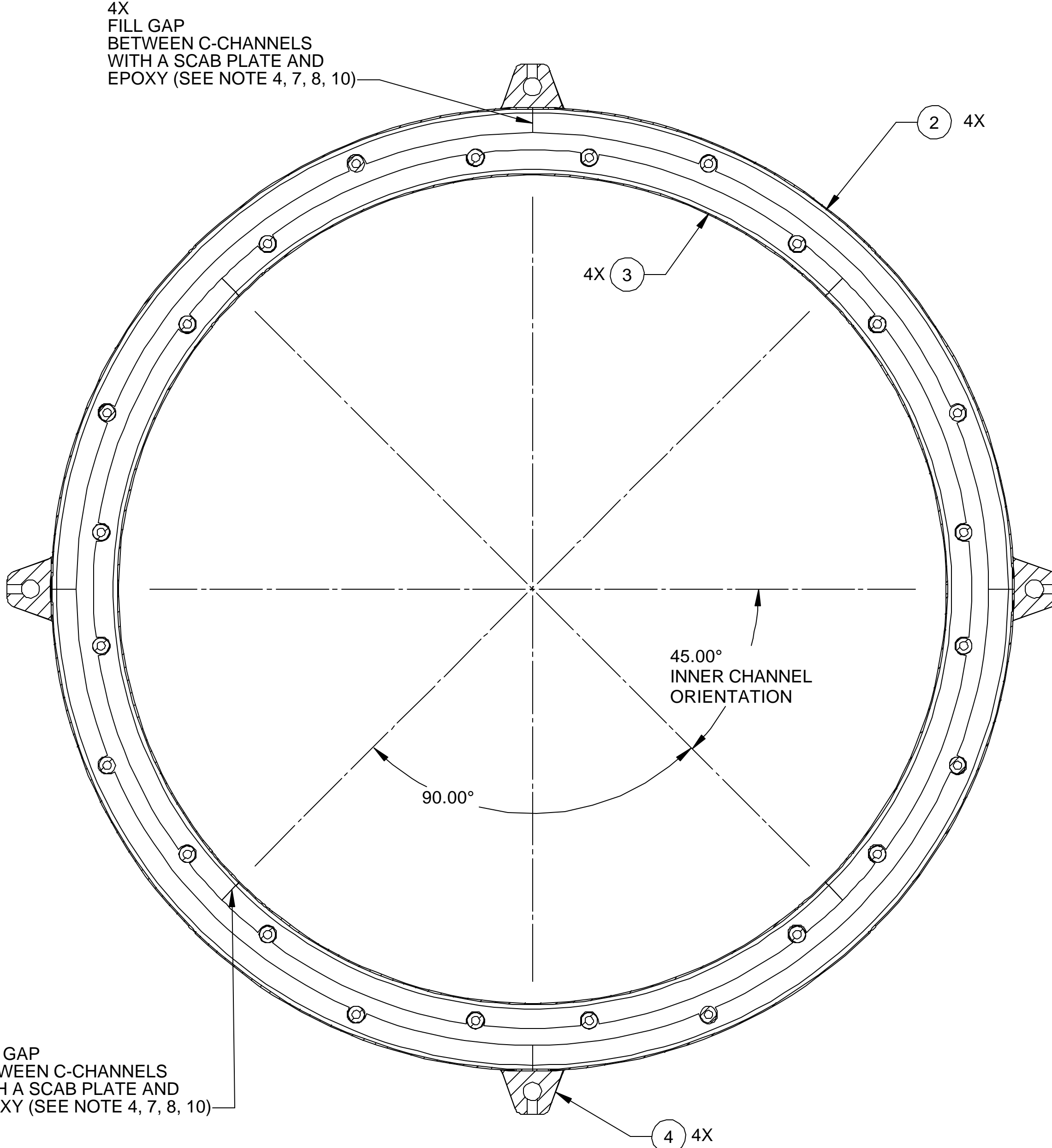


SECTION A-A
SCALE 1 : 1.25

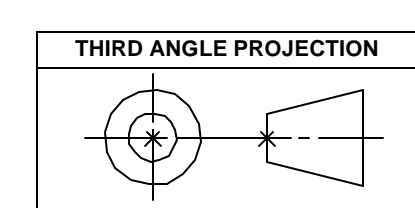
- NOTES: UNLESS OTHERWISE SPECIFIED
- DIMENSIONS IN MILLIMETERS
 - DIMENSIONS AND TOLERANCING PER ASME Y14.5M-1994
 - SURFACE TEXTURE PER ANI/ASME B 46.1-1985
 - GAPS AND HOLES TO BE FILLED WITH HYSOL EA9396 EPOXY AND CARBON BLACK FILLER
 - USE HYSOL EA9396 EPOXY AND .003" DIA. GLASS BEAD FILLER
 - POSITIONAL TOLERANCES ARE BASED UPON INDIVIDUAL PART TOLERANCES AND BOND FIXTURE (PART 21F510)
TOLERANCES: THIS IS NOT A MACHINE DIMENSION
 - ANGLE ASSIGNS CORRECT ORIENTATION OF C-CHANNELS
 - C-CHANNEL ORIENTATION ESTABLISHED USING FIXTURE PART 21F513
 - ALL BONDING SURFACES MUST BE ABRASSED AND APPROPRIATELY CLEANED PRIOR TO BONDING

THIRD ANGLE PROJECTION		UNLESS OTHERWISE SPECIFIED	SHOP ORDERS	SER. NO.	ERNEST ORLANDO LAWRENCE BERKELEY NATIONAL LABORATORY		
REV	DWG	CHK	ZONE	DATE	ACCT. NO.	NO. REQD	DATE ISSD
					X.X ± 0.5	FRAC. ± 1/64	
					X.XX ± 0.25	ANGLES ± 30°	
					X.XXX ± 0.013	FINISH 1.6	
			DO NOT SCALE PRINT		ATLAS PIXEL DETECTOR SECTOR MOUNTING RING RING ASSEMBLY		
					UNIVERSITY OF CALIFORNIA - BERKELEY #		
					SCALE: 1:1.25		
					SHEET 1 OF 2		
					DWG. NO. 21F5224		
					SIZE -		
					REV. -		

DWG. NO. 21F5224		SIZE	REV. 2	SHEET NO. 1
ITEM	PART NO.	REQD	DESCRIPTION	MATERIAL

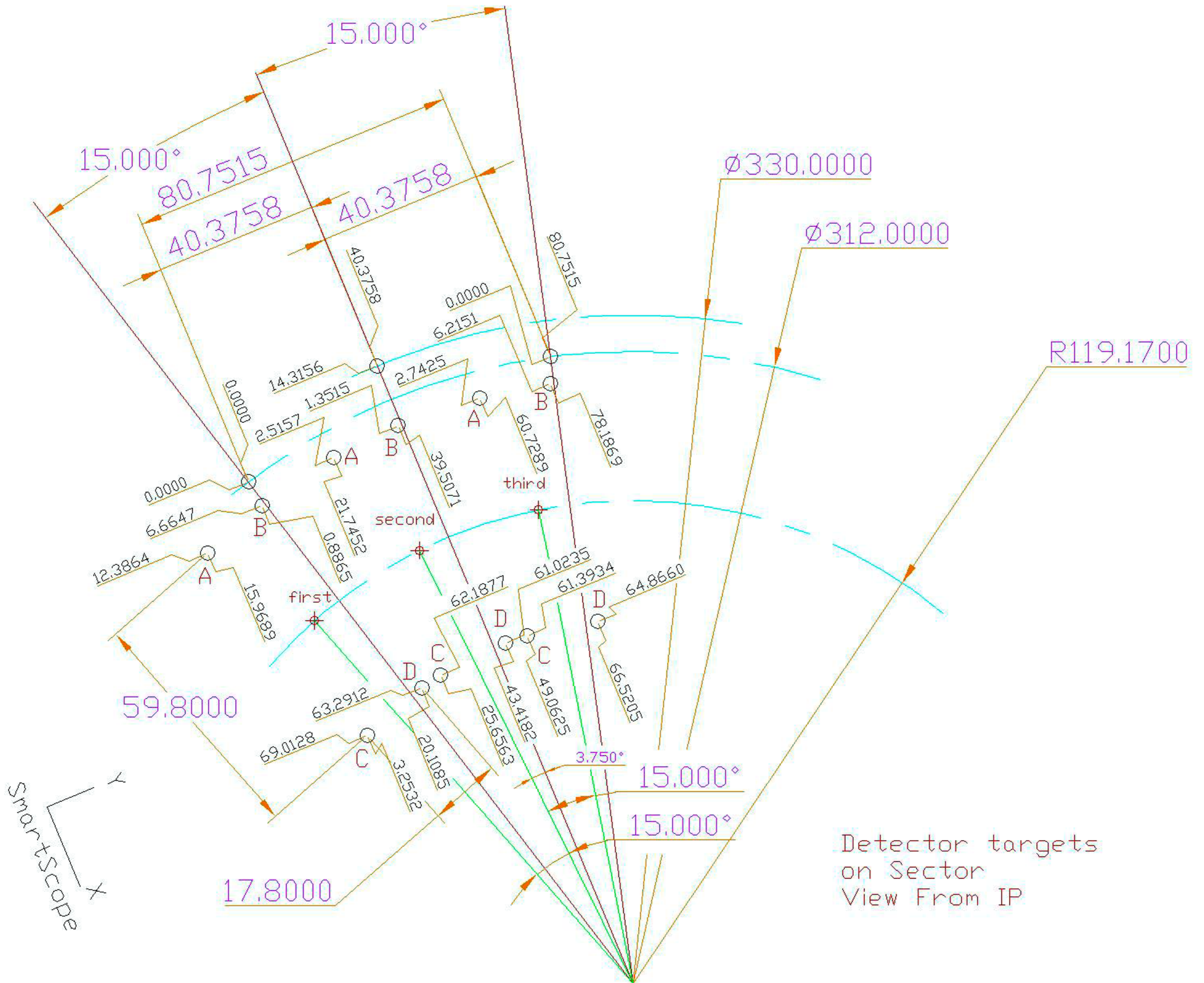


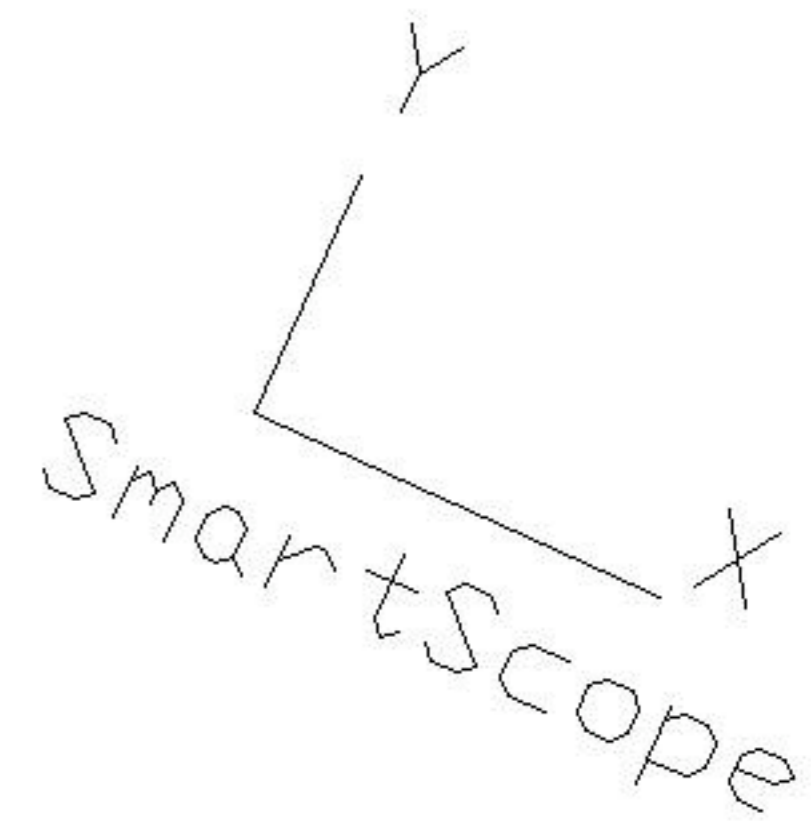
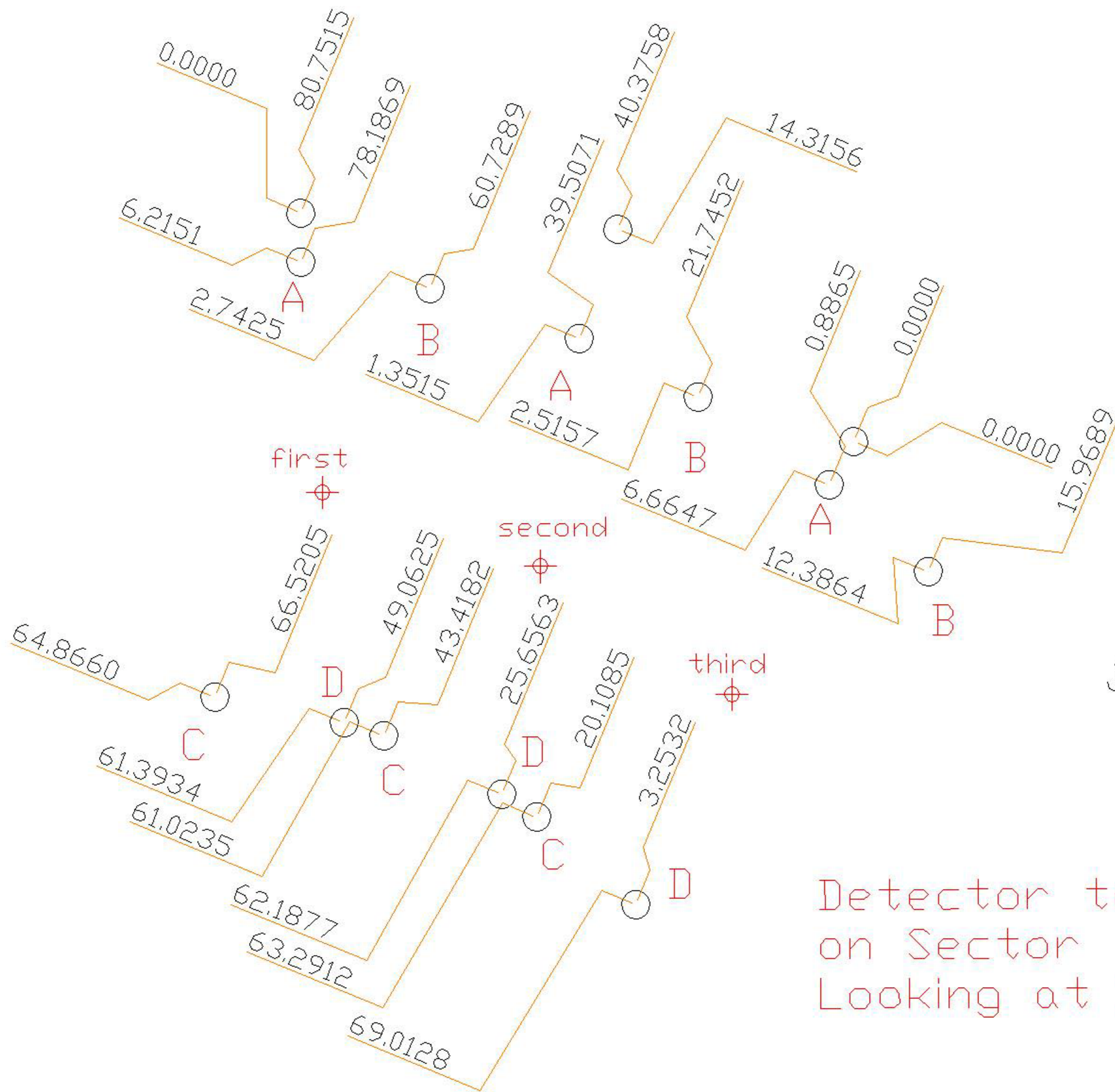
- NOTES: UNLESS OTHERWISE SPECIFIED
- DIMENSIONS IN MILLIMETERS
 - DIMENSIONS AND TOLERANCING PER ASME Y14.5M-1994
 - SURFACE TEXTURE PER ANI/ASME B 46.1-1985
 - GAPS AND HOLES TO BE FILLED WITH HYSOL EA9396 EPOXY AND CARBON BLACK FILLER
 - USE HYSOL EA9396 EPOXY AND .003" DIA. GLASS BEAD FILLER
 - POSITIONAL TOLERANCES ARE BASED UPON INDIVIDUAL PART TOLERANCES AND BOND FIXTURE TOLERANCES; THIS IS NOT A MACHINE DIMENSION
 - ANGLE ASSIGNS CORRECT ORIENTATION OF C-CHANNELS
 - C-CHANNEL ORIENTATION ESTABLISHED USING FIXTURE PARTS 102, 104-1, AND 104-3
 - ALL BONDING SURFACES MUST BE ABRASSED AND APPROPRIATELY CLEANED PRIOR TO BONDING
 - SCAB PLATE FABRICATED FROM EXTRA C-CHANNEL MATERIAL



REV	DWG	CHK	ZONE	DATE	CHANGES	UNLESS OTHERWISE SPECIFIED	SHOP ORDERS	SER. NO.	ACCT. NO.	DATE ISSD	ERNEST ORLANDO LAWRENCE BERKELEY NATIONAL LABORATORY UNIVERSITY OF CALIFORNIA - BERKELEY		
						TOLERANCES X.X ± 0.5 FRAC. ± 1/64 X.XX ± 0.25 ANGLES ± 30° X.XXX ± 0.013 FINISH 1.6	FILE NO. DATE REQD				ATLAS PIXEL DETECTOR SECTOR MOUNTING RING RING ASSEMBLY		
						DO NOT SCALE PRINT	PROJECT NAME ATL-IP-ED-0071	PROJECT NUMBER	DESIGN ACCT. NO.	CATEGORY CIDE	SCALE: 1:1.25		
						THREADS ARE CLASS 2	DATE 5/9/2001	DATE 6/1/2001	DATE ????	DESIGN ACCT. NO. PIAP-11	CATEGORY CIDE AP6250	SCALE: 1:1.25	
						CHAMFER ENDS OF ALL SCREEN THREADS 30°	PROJECT NAME ATLAS SILICON SUBSYSTEM	PROJECT NUMBER	DESIGN ACCT. NO. ASSEM	CATEGORY CIDE N/A	SCALE: 1:1.25	DO NOT SCALE PRINTS	
						CUT ROUND, 1.5 THREAD RELIEF ON MACHINED THREADS	DATE 5/9/2001	DATE 6/1/2001	DATE ????	DESIGN ACCT. NO. PIAP-11	CATEGORY CIDE AP6250	SCALE: 1:1.25	DO NOT SCALE PRINTS
						BREAK EDGES .016 MAX. ON MACHINED WORK	DATE 5/9/2001	DATE 6/1/2001	DATE ????	DESIGN ACCT. NO. PIAP-11	CATEGORY CIDE AP6250	SCALE: 1:1.25	DO NOT SCALE PRINTS
						REMOVE BURRS, WELD SPATTER & LOOSE SCALE	DATE 5/9/2001	DATE 6/1/2001	DATE ????	DESIGN ACCT. NO. PIAP-11	CATEGORY CIDE AP6250	SCALE: 1:1.25	DO NOT SCALE PRINTS
						IN ACCORDANCE WITH ASME Y14.5M & B46.1	DATE 5/9/2001	DATE 6/1/2001	DATE ????	DESIGN ACCT. NO. PIAP-11	CATEGORY CIDE AP6250	SCALE: 1:1.25	DO NOT SCALE PRINTS

DWG. NO.	21F5224
REV.	2
SHEET	2 OF 2





Detector targets
on Sector
Looking at IP