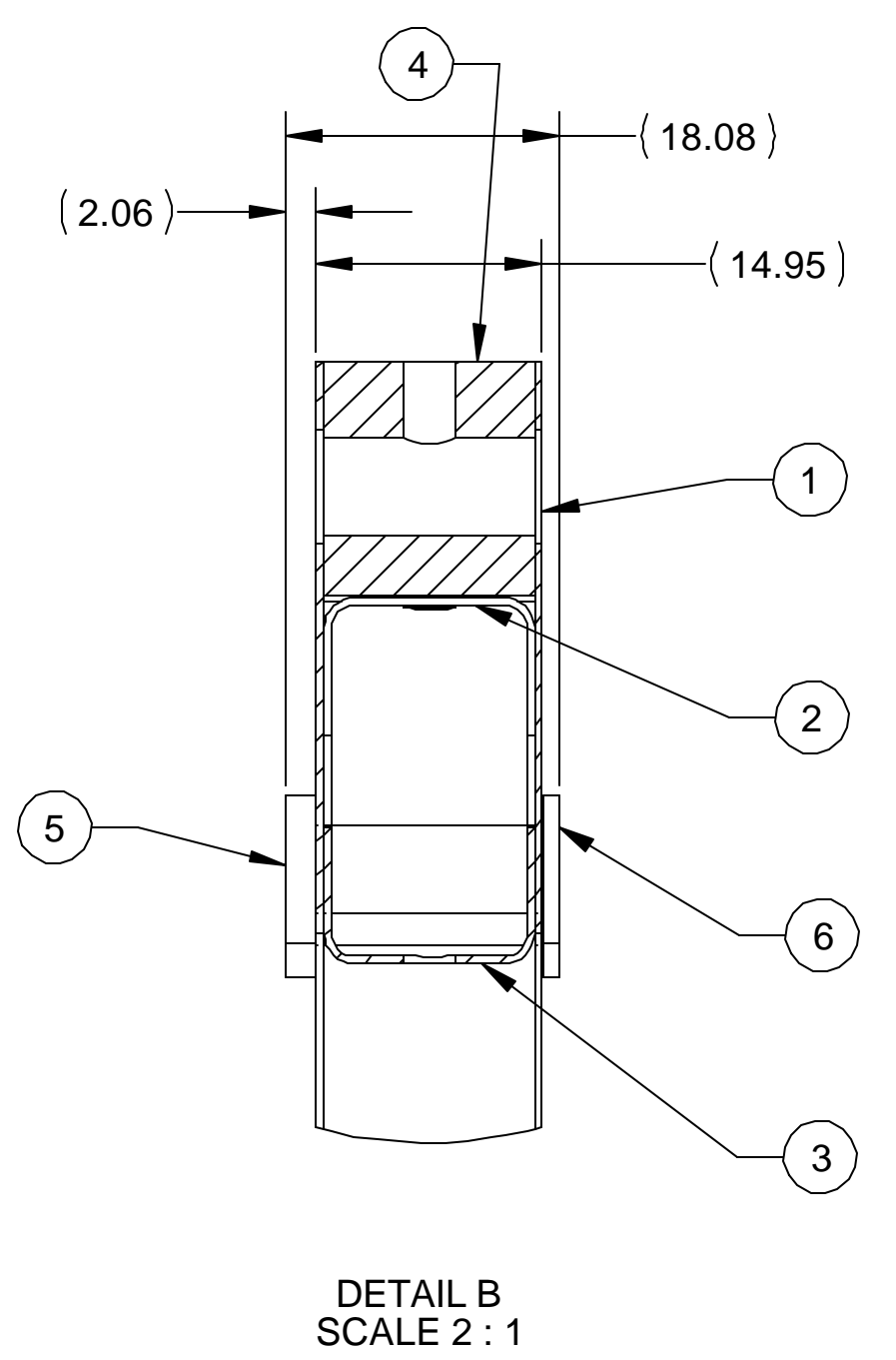
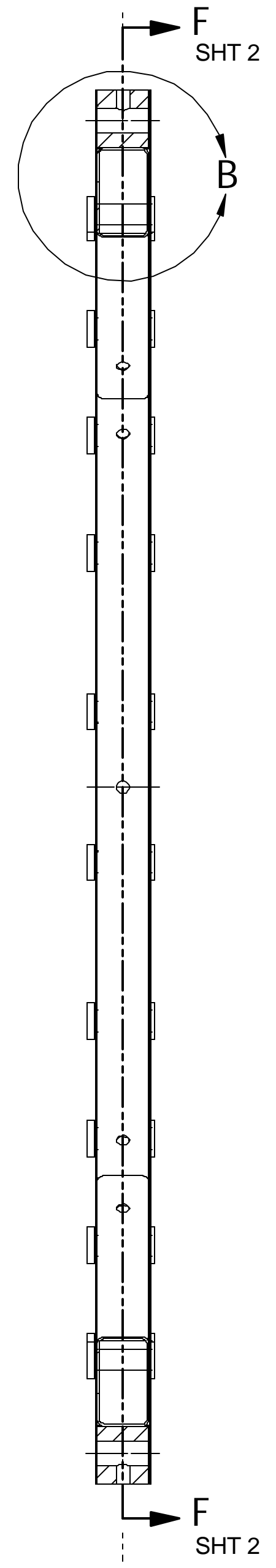
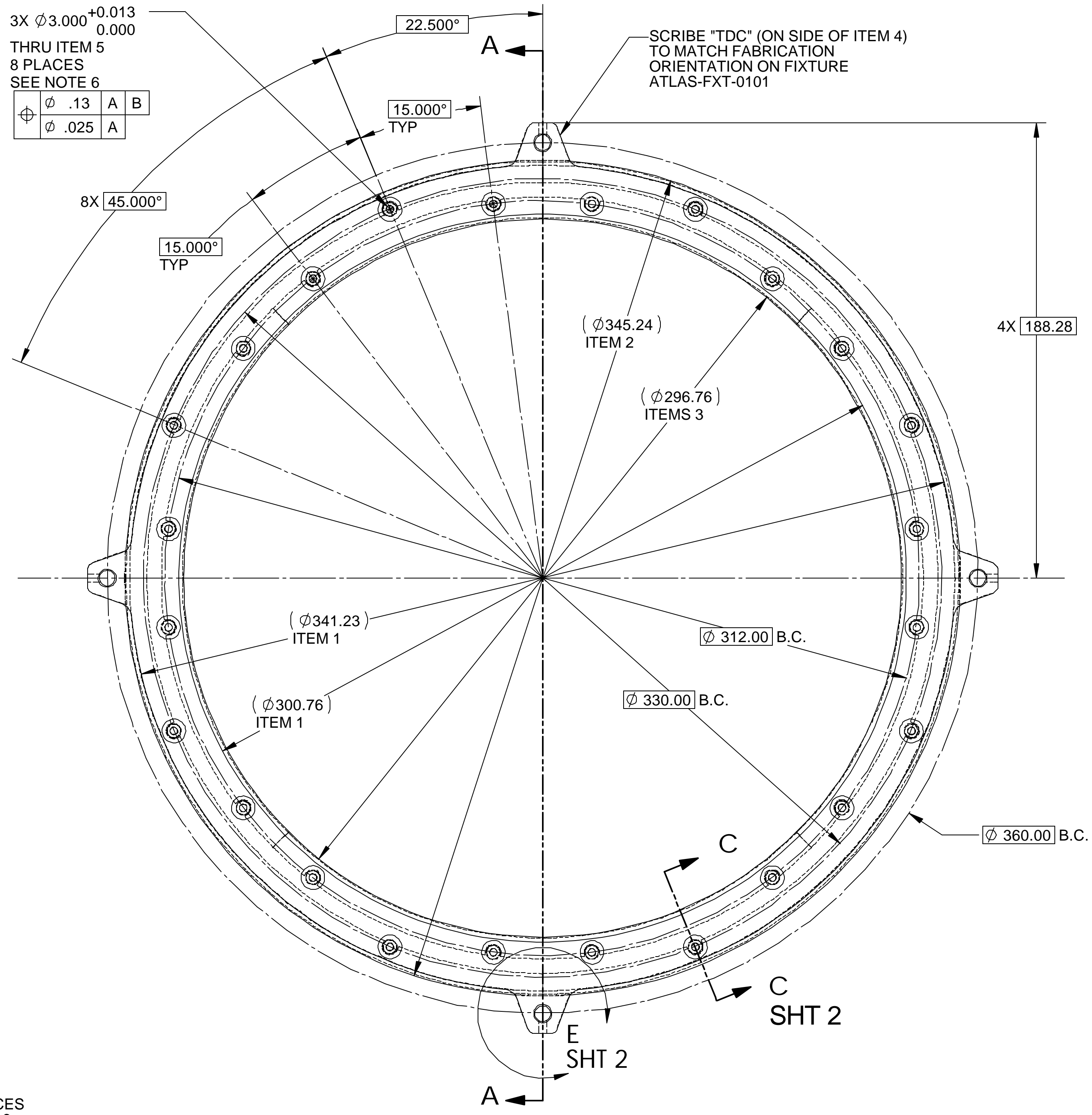
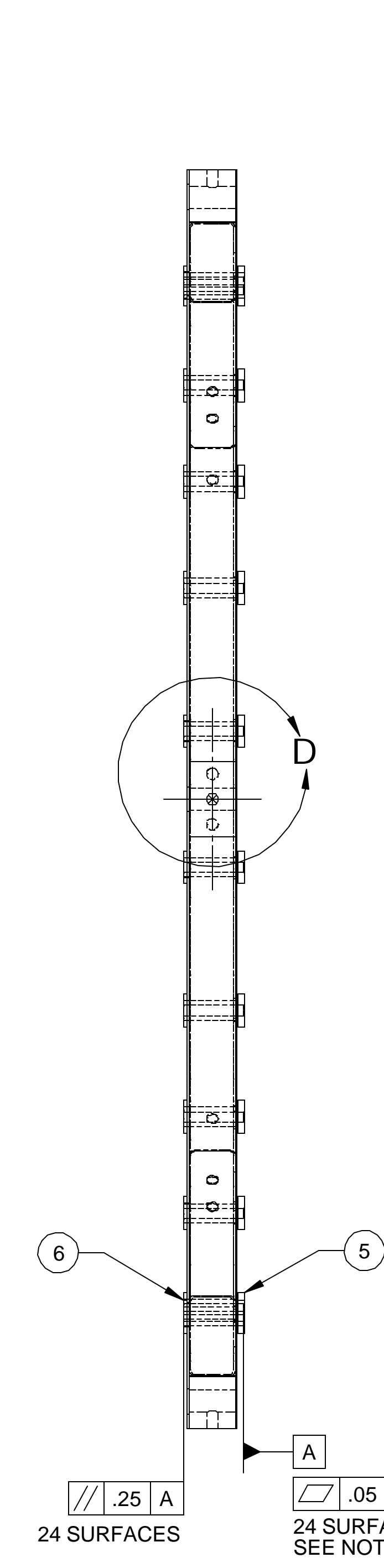


| ITEM | PART NO. | REQD | DESCRIPTION | MATERIAL |
|------|----------|------|------------------------|-------------------|
| 6 | 21F526 | 24 | RING WASHER | 3-D CARBON-CARBON |
| 5 | 21F526 | 24 | RING BUSHING | 3-D CARBON-CARBON |
| 4 | 21F526 | 2 | RING MOUNT TAB | 3-D CARBON-CARBON |
| 3 | 21F526 | 4 | RING INNER C CHANNEL | C-C WOVEN FABRIC |
| 2 | 21F524 | 4 | RING OUTER C CHANNEL | C-C WOVEN FABRIC |
| 1 | 21F523 | 4 | SECTOR MOUNT FACESHEET | C-C LAMINATE |

8 7 6 5 4 3

D
C
B
A



- NOTES: UNLESS OTHERWISE SPECIFIED
- DIMENSIONS IN MILLIMETERS
 - DIMENSIONS AND TOLERANCING PER ASME Y14.5M-1994
 - SURFACE TEXTURE PER ANI/ASME B 46.1-1985
 - GAPS AND HOLES TO BE FILLED WITH HYSOL EA9396 EPOXY AND CARBON BLACK FILLER
 - USE HYSOL EA9396 EPOXY AND .003" DIA. GLASS BEAD FILLER
 - POSITIONAL TOLERANCES ARE BASED UPON INDIVIDUAL PART TOLERANCES AND BOND FIXTURE (PART 21F510)
 - TOLERANCES: THIS IS NOT A MACHINE DIMENSION
 - ANGLE ASSIGNS CORRECT ORIENTATION OF C-CHANNELS
 - C-CHANNEL ORIENTATION ESTABLISHED USING FIXTURE PART 21F513
 - ALL BONDING SURFACES MUST BE ABRASSED AND APPROPRIATELY CLEANED PRIOR TO BONDING

| | | | | | | | |
|-------------------------------|--|---|--|---|--|--|--|
| <p>THIRD ANGLE PROJECTION</p> | | <p>UNLESS OTHERWISE SPECIFIED</p> <p>ACCT NO. X.X ± 0.5 FRAC. ± 1/64</p> <p>TOL. X.XX ± 0.25 ANGLES ± 30°</p> <p>X.XXX ± 0.013 FINISH 1.6</p> <p>DO NOT SCALE PRINT</p> <p>THREADS ARE CLASS 2</p> <p>CHAMFER ENDS OF ALL SCREEN THREADS 30°</p> <p>CUT ROUND, 1.5 THREAD RELIEF ON MACHINED THREADS</p> <p>BREAK EDGES .016 MAX. ON MACHINED WORK</p> <p>REMOVE BURRS, WELD SPLATTER & LOOSE SCALE</p> <p>IN ACCORDANCE WITH ASME Y14.5M & B46.1</p> | | <p>SHOP ORDERS</p> <p>ACCT NO. NO. REQD</p> <p>DATE ISSD</p> <p>DATE REQD</p> <p>SURFACE TREATMENT</p> <p>ITEM METHOD TAG</p> <p>PROJECT NUMBER ATL-IP-ED-0071</p> <p>PROJECT US ATLAS SILICON SUBSYSTEM</p> <p>DWG BY W. K. MILLER DATE 5/9/2001</p> <p>CHK BY BILL WILDS DATE 6/1/2001</p> <p>APR BY E. ANDERSSON DATE ????</p> | | <p>ERNEST ORLANDO LAWRENCE BERKELEY NATIONAL LABORATORY UNIVERSITY OF CALIFORNIA - BERKELEY</p> <p>ATLAS PIXEL DETECTOR SECTOR MOUNTING RING RING ASSEMBLY</p> <p>MICROFILMED: ASSEM N/A</p> <p>SHOW ON: N/A</p> <p>SCALE: 1:1.25</p> <p>DO NOT SCALE PRINTS</p> | |
| <p>REV DWG CHK ZONE DATE</p> | | <p>CHANGES</p> | | <p>PATENT CLEAR: DESIGN ACCT. NO. CATEGORY CIDE</p> <p>PIAP-11 AP6250</p> | | <p>DWG. NO. 21F5224</p> <p>SIZE</p> <p>REV.</p> | |

8

7

6

5

4

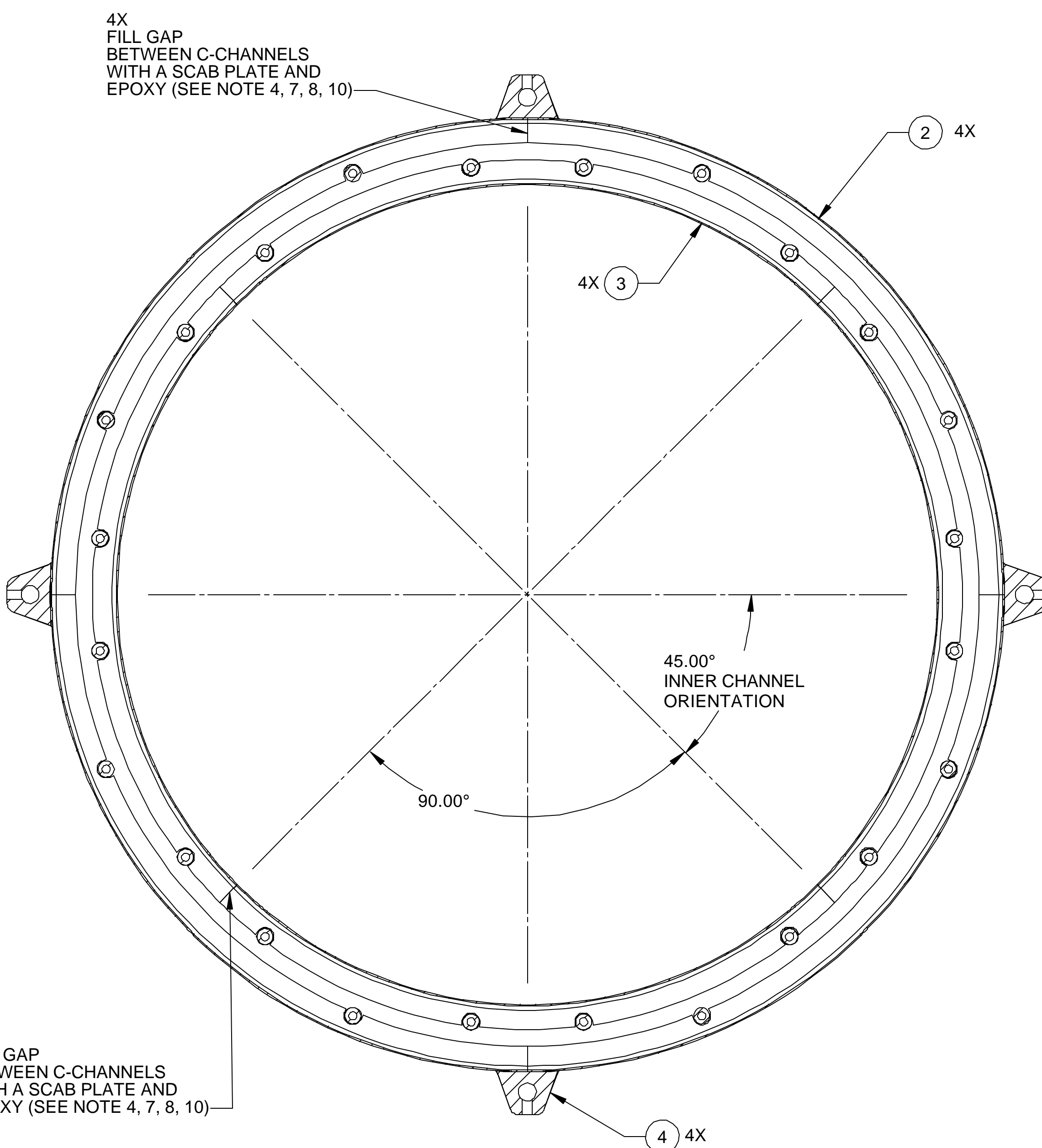
3

2

1

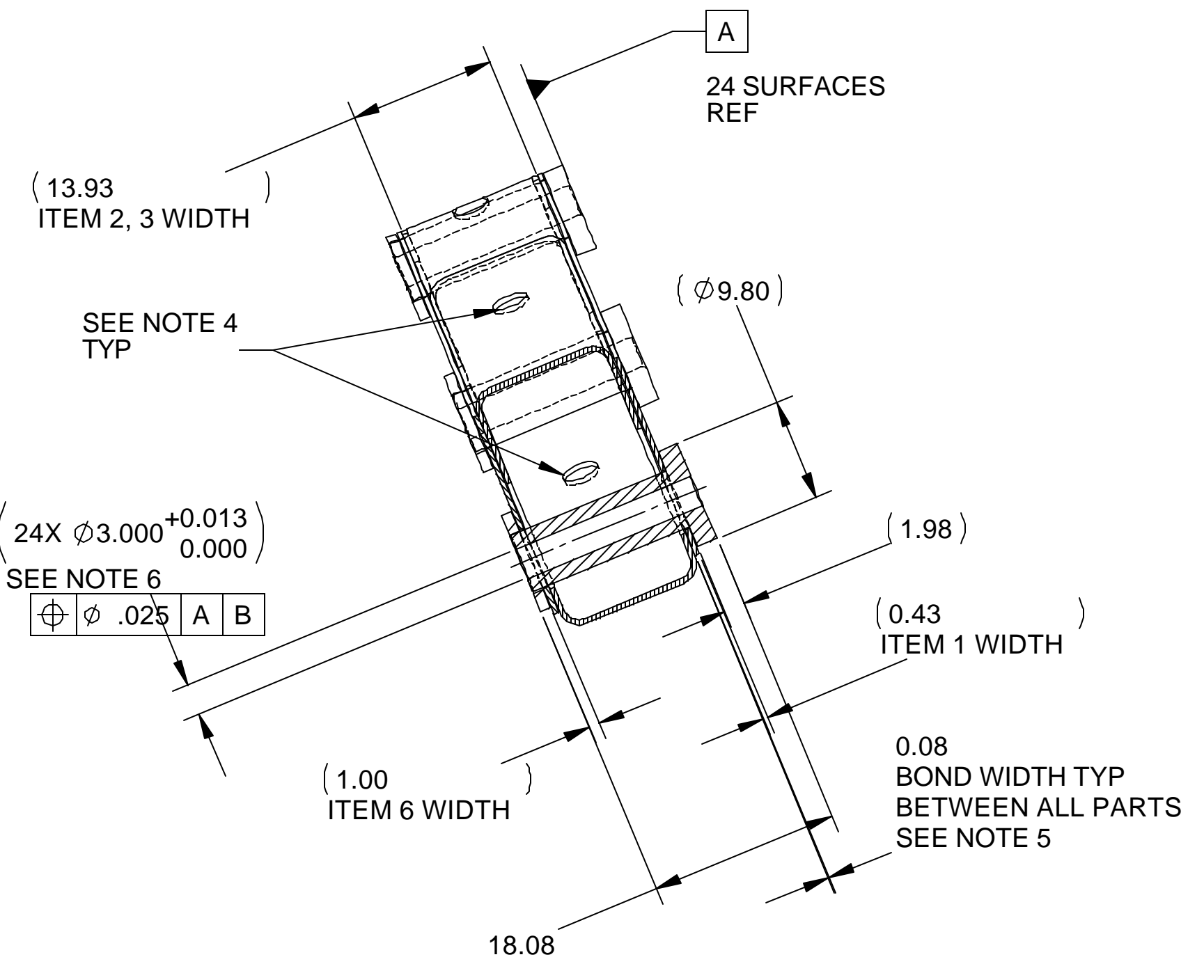
D
C
B
A

| | | | | | |
|----------|----------|------|-------------|----------|---|
| DWG. NO. | 21F5224 | SIZE | REV. | SH. | 1 |
| ITEM | PART NO. | REQD | DESCRIPTION | MATERIAL | |

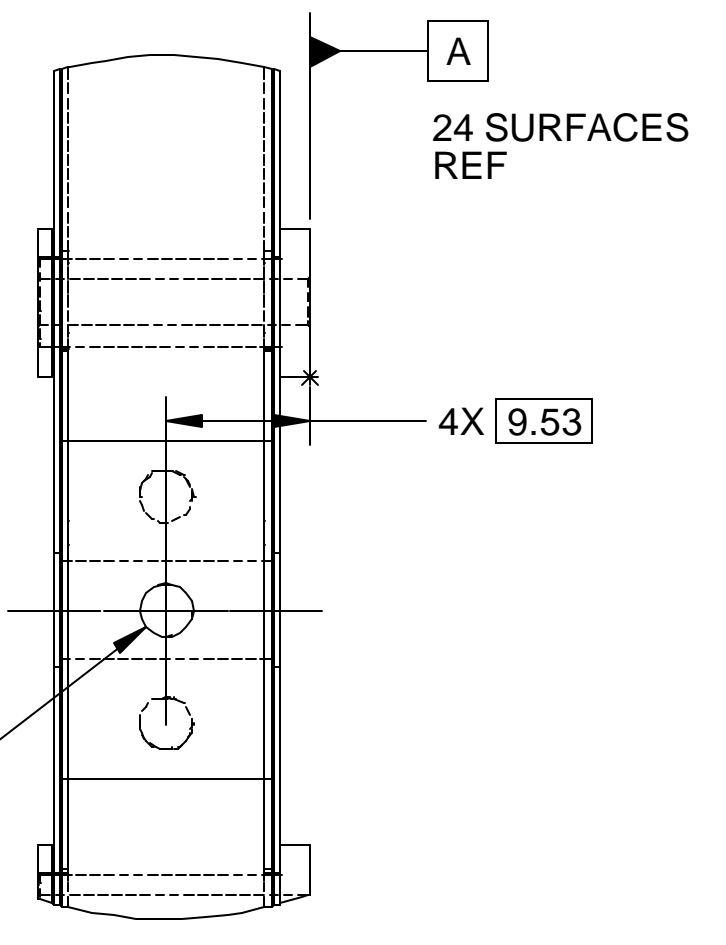


SECTION F-F
SCALE 1 : 1.25

4X
FILL GAP
BETWEEN C-CHANNELS
WITH A SCAB PLATE AND
EPOXY (SEE NOTE 4, 7, 8, 10)

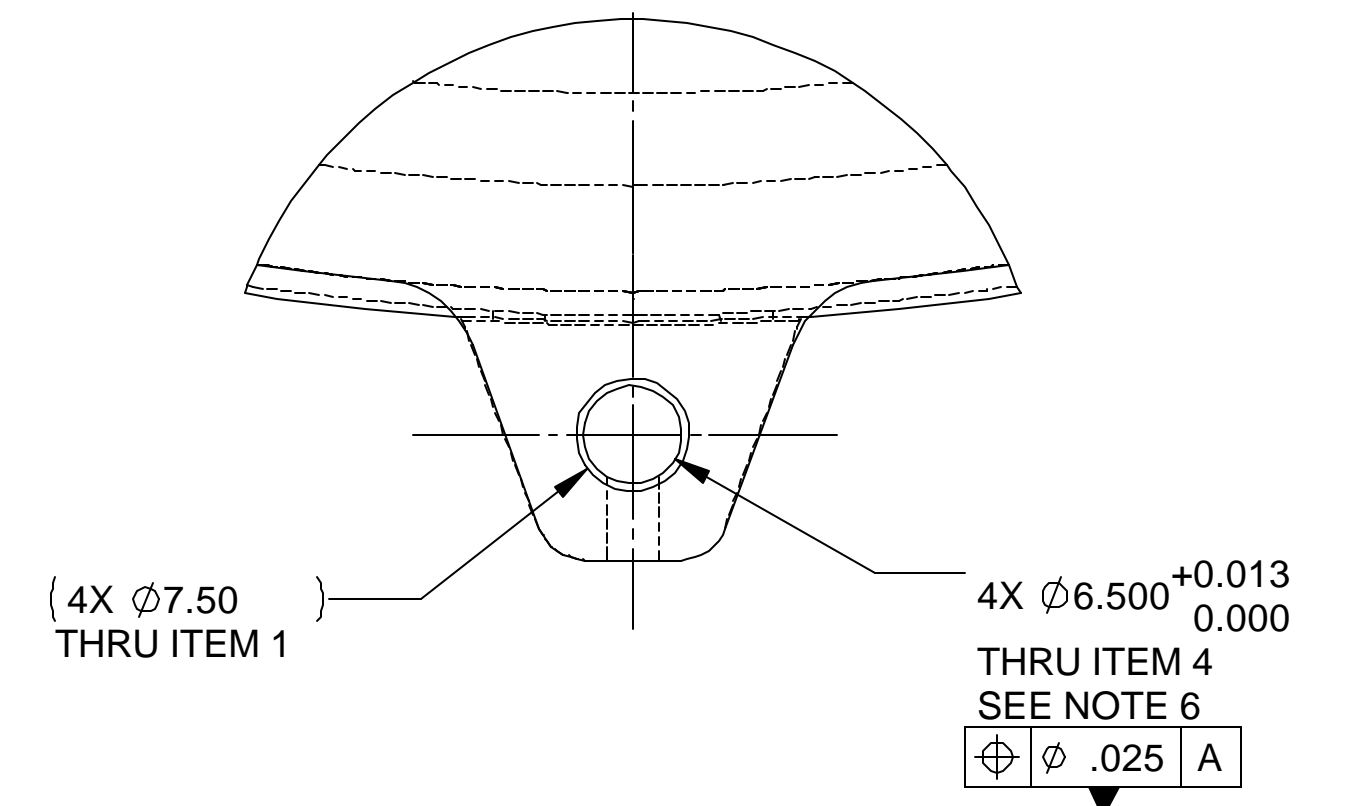


A
24 SURFACES
REF



SECTION C-C
SCALE 2 : 1

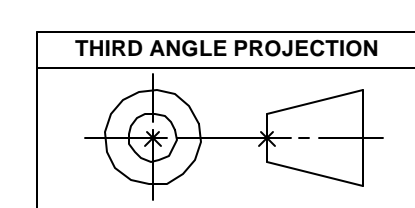
DETAIL D
SHT 1
SCALE 2 : 1



DETAIL E
SHT 2
SCALE 2 : 1

NOTES: UNLESS OTHERWISE SPECIFIED

- DIMENSIONS IN MILLIMETERS
- DIMENSIONS AND TOLERANCING PER ASME Y14.5M-1994
- SURFACE TEXTURE PER ANI/ASME B 46.1-1985
- GAPS AND HOLES TO BE FILLED WITH HYSOL EA9396 EPOXY AND CARBON BLACK FILLER
- USE HYSOL EA9396 EPOXY AND .003" DIA. GLASS BEAD FILLER
- POSITIONAL TOLERANCES ARE BASED UPON INDIVIDUAL PART TOLERANCES AND BOND FIXTURE TOLERANCES; THIS IS NOT A MACHINE DIMENSION
- ANGLE ASSIGNS CORRECT ORIENTATION OF C-CHANNELS
- C-CHANNEL ORIENTATION ESTABLISHED USING FIXTURE PARTS 102, 104-1, AND 104-3
- ALL BONDING SURFACES MUST BE ABRASSED AND APPROPRIATELY CLEANED PRIOR TO BONDING
- SCAB PLATE FABRICATED FROM EXTRA C-CHANNEL MATERIAL



| | | | | | | | | | | | | | | | | | | | | | |
|-----|-----|-----|------|------|---------|--|-------------|----------|-----------|----------|-----------|-----------|--|---|----------------------------------|------------|------------------|---------------|----------|------|------|
| REV | DWG | CHK | ZONE | DATE | CHANGES | UNLESS OTHERWISE SPECIFIED | SHOP ORDERS | SER. NO. | ACCT. NO. | NO. REQD | DATE ISSD | DATE REQD | ERNEST ORLANDO LAWRENCE BERKELEY NATIONAL LABORATORY UNIVERSITY OF CALIFORNIA - BERKELEY # | PROJECT NAME ATLAS SILICON SUBSYSTEM | PROJECT NUMBER ATL-IP-ED-0071 | PROJ. DATE | DESIGN ACCT. NO. | CATEGORY CIDE | DWG. NO. | SIZE | REV. |
| | | | | | | TOLERANCES X.X \pm 0.5 FRAC. \pm 1/64 X.XX \pm 0.25 ANGLES \pm 30° X.XXX \pm 0.013 FINISH 1.6 | | | | | | | | ATLAS PIXEL DETECTOR SECTOR MOUNTING RING RING ASSEMBLY | ATL-IP-ED-0071 | | | | 21F5224 | | |