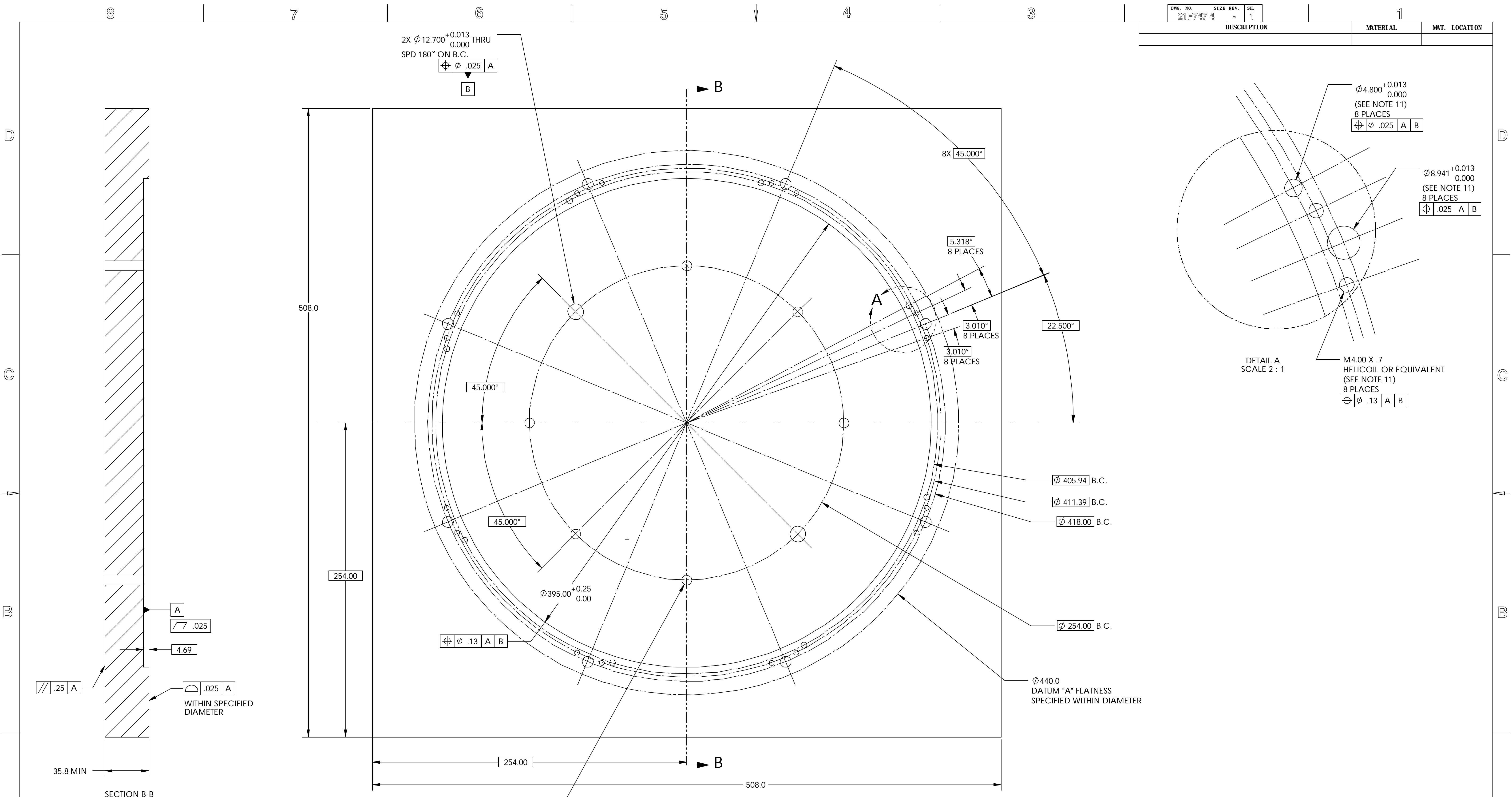


DWG. NO. 21F747 4	SIZE = 1	REV. = 1	SHEET NO. 1
DESCRIPTION	MATERIAL	MT. LOCATION	



NOTES: UNLESS OTHERWISE SPECIFIED

- ALL DIMENSIONS IN MILLIMETERS
- DIMENSIONS AND TOLERANCING PER ASME Y14.5M-1994
- SURFACE TEXTURE PER ANI/ASME B 46.1-1985
- REMOVE ALL BURRS AND BREAK SHARP EDGES TO A MAXIMUM OF .38
- ALL INSIDE CORNERS TO BE .38 RADIUS MAX
- COUNTERSINK 82 DEGREES ALL TAPPED HOLES TO MAJOR DIAMETER
- COUNTERSINK 82 DEGREES APPROXIMATELY .38 DEEP ALL DRILLED HOLES
- PARTS TO BE THOROUGHLY CLEANED TO REMOVE ALL OIL, GREASE, DIRT AND CHIPS
- ROOM TEMPERATURE DURING MACHINING TO BE RECORDED AND PROVIDED TO LAWRENCE BERKELEY LABORATORY; TOP AND BOTTOM PLATES TO BE MACHINED AT THE SAME TEMPERATURE (WITHIN 5 DEGREES F)
- INSPECTION REPORTS TO BE PROVIDED TO LAWRENCE BERKELEY LABORATORY
- HOLES ARE THRU HOLES, OR 3X DIA. DEEP WITH A SMALLER PILOT HOLE THRU

REV	DWG	CHK	ZONE	DATE	CHANGES

UNLESS OTHERWISE SPECIFIED		SHOP ORDERS		SER. NO.
TOLERANCES	X.X ± 0.5	FRAC. ± 1/64	NO. REQD.	DATE ISSD
	X.XX ± 0.25	ANGLES ± 30'	DATE REQD.	
	X.XXX ± 0.013	FINISH 1.6		
DO NOT SCALE PRINT		INDEX METHOD TAG		
THREADS ARE CLASS 2		PROJECT NUMBER		
CHAMFER ENDS OF ALL SCREW THREADS 30°		PROJECT NAME		
CUT ROUNDS, 1.5 THREAD RELIEF ON MACHINED THREADS		PROJECT US ATLAS SILICON SUBSYSTEM		
BREAK EDGES .016 MAX. ON MACHINED WORK		DWG. BY W. K. MILLER		
REMOVE BURRS, WELD SPLATTER & LOOSE SCALE		DATE 4/16/2002		
IN ACCORDANCE WITH ASME Y14.5m & B46.1		CHK BY BILL WILDS		
		DATE 4/16/2002		
		APR BY E. ANDERSSON		
		DATE 4/16/2002		

ERNEST ORLANDO LAWRENCE BERKELEY NATIONAL LABORATORY			
UNIVERSITY OF CALIFORNIA - BERKELEY #			
ATLAS PIXEL DETECTOR ENDCONE BOND FIXTURE BOTTOM GRAPHITE PLATE			
MICROFILMED:	DWG. TYPE	SHOWS ON	SCALE: 1:1.5
	PART	21F746	DO NOT SCALE PRINTS
PATENT CLEAR:	DESIGN ACCT. NO.	PIAP-11	SHEET 1 OF 1
	CATEGORY CODE	AP6250	SIZE
	DWG. NO.	21F747 4	REV.