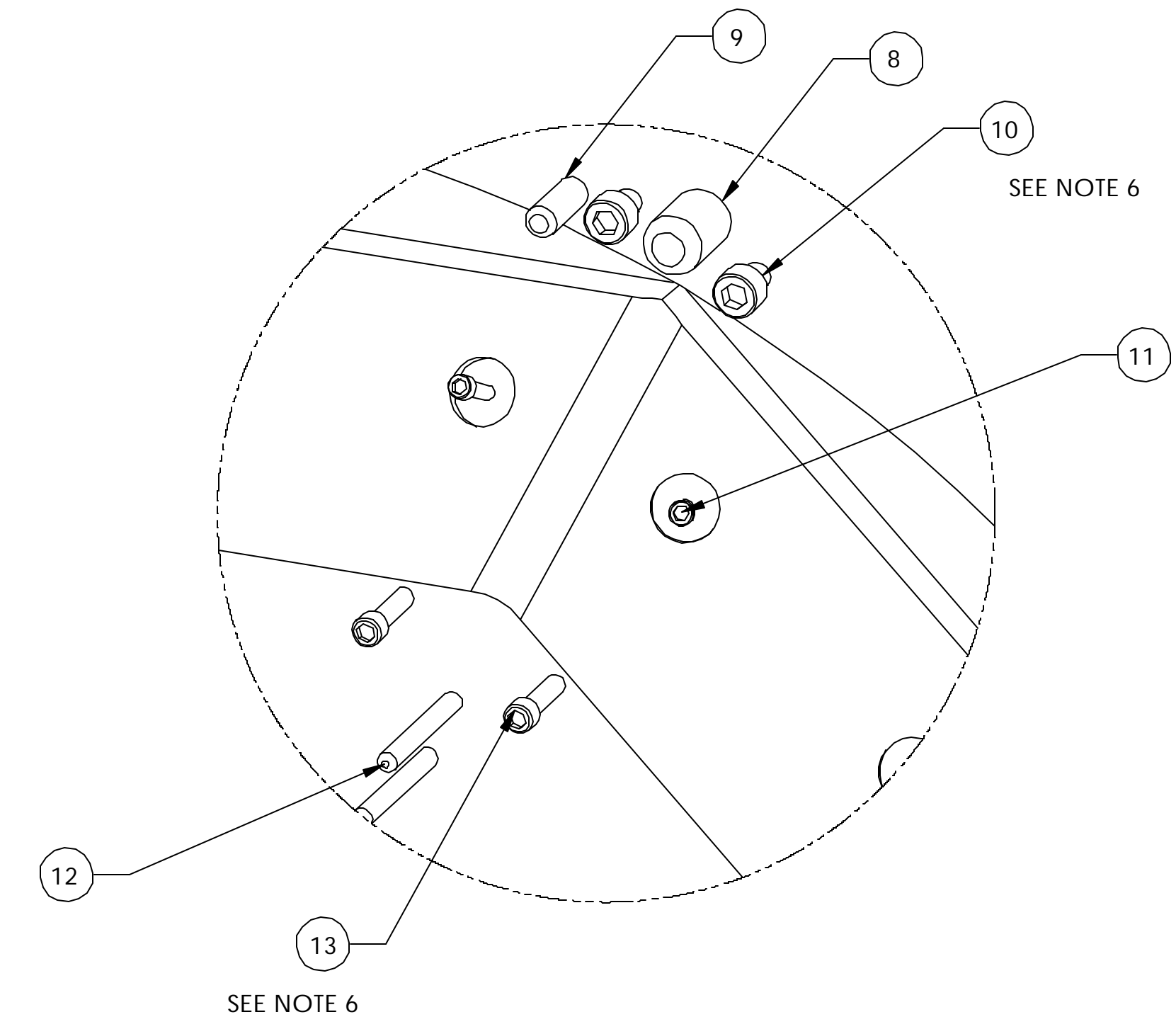
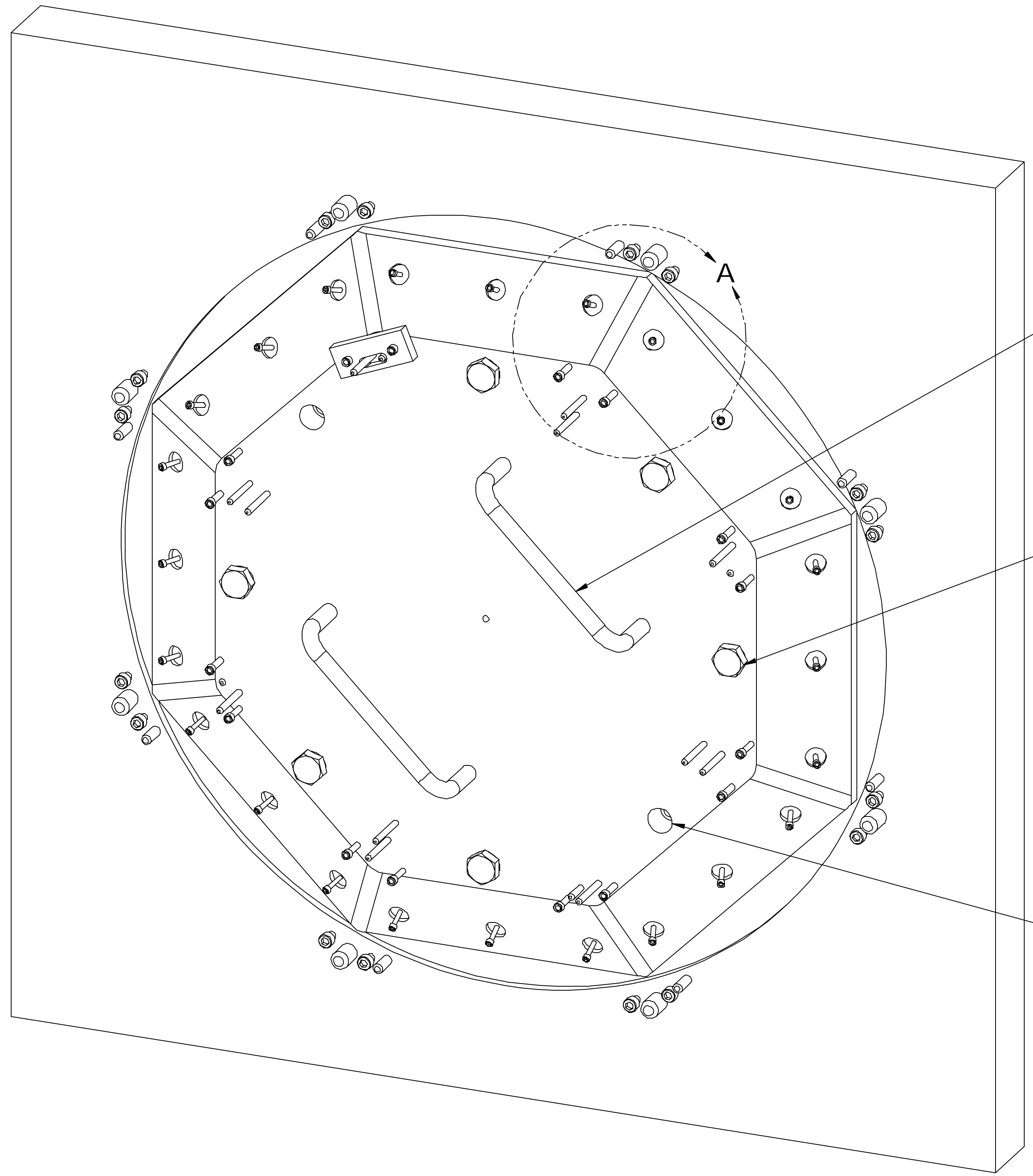


ITEM	PART NO.	REQD	DESCRIPTION	MATERIAL
14		4	3.00 DIA. GAGE PIN X 25.4 LONG	STEEL
13		16	M3 X .50 SOCKET HEAD CAP SCREW X 25.4 LONG	STEEL
12		12	3.30 DIA. GAGE PIN X 25.4 LONG	STEEL
11		24	M3 X .5 SOCKET HEAD CAP X 9.0 LONG	STEEL
10		16	M4 X .7 SOCKET HEAD CAP SCREW X 8.0 LONG	STEEL
9		8	4.80 DIA. GAGE PIN X 25.4 LONG	STEEL
8		8	8.91 DIA. GAGE PIN X 25.4 LONG	STEEL
7		4	#8-32 UNC-2A SOCKET HEAD CAP SCREW	STEEL
6		2	4" HANDLE, BLACK ANODIZE ALUM	ALUM
5		6	M8 X 38.1 HEX HEAD BOLT	STEEL
4		2	1/2" DIA. DOWEL PIN	STEEL
3	21F749	8	ENDCONE BOND FIXTURE- INNER VERTEX CLAMP	ALUM
2	21F748	1	ENDCONE BOND FIXTURE - TOP PLATE	GRAPHITE
1	21F747	1	ENDCONE BOND FIXTURE - BOTTOM PLATE	GRAPHITE

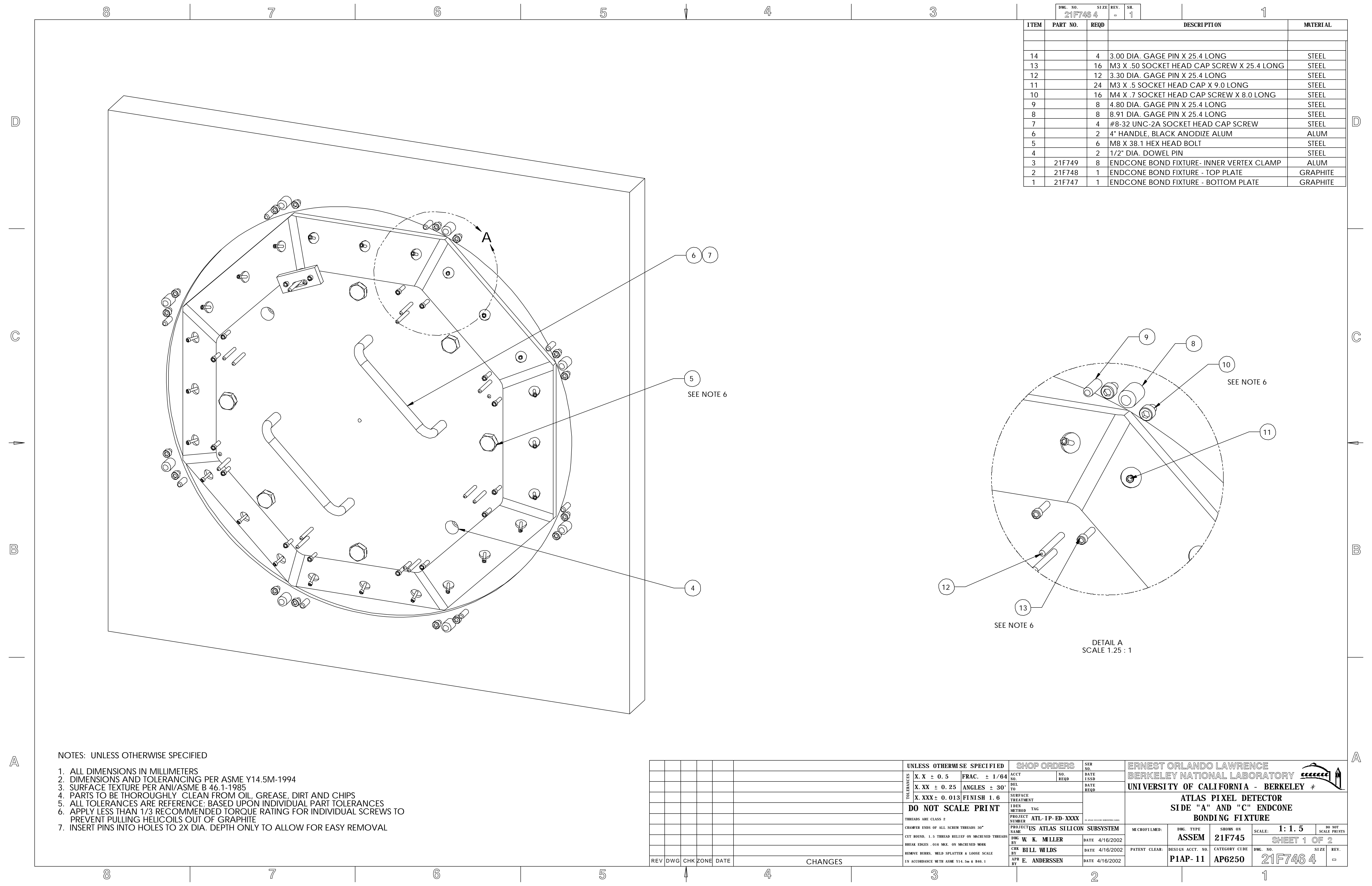


DETAIL A
SCALE 1.25 : 1

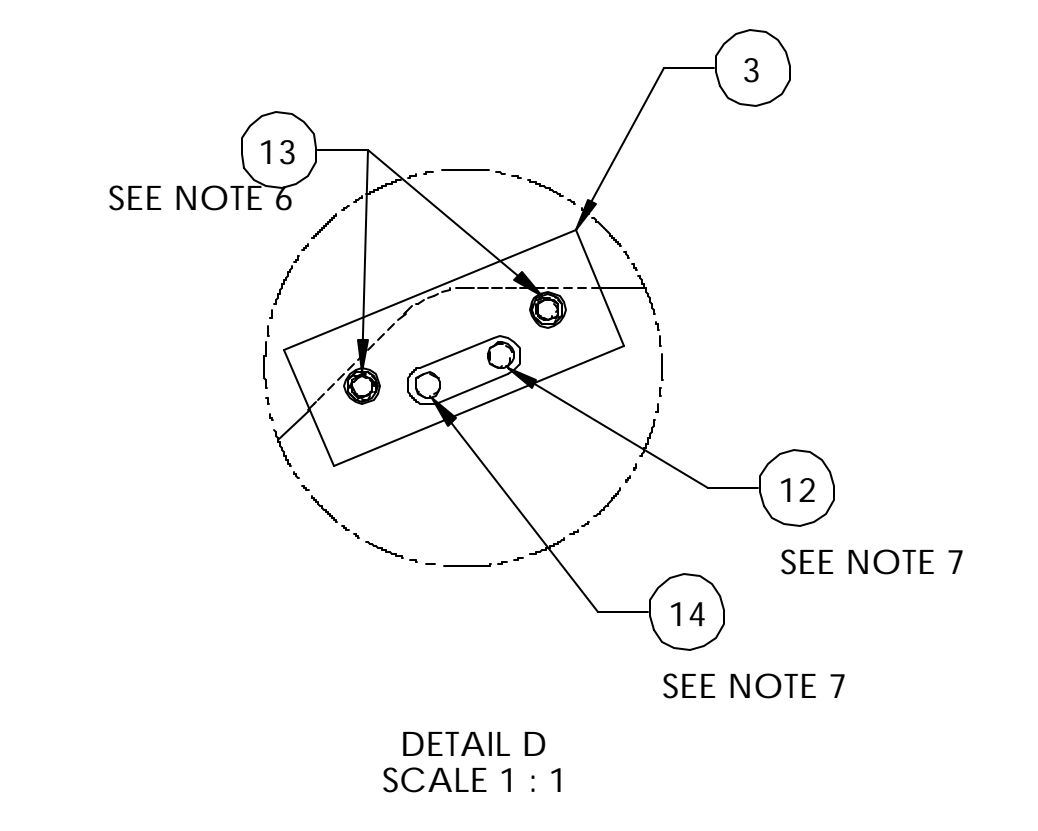
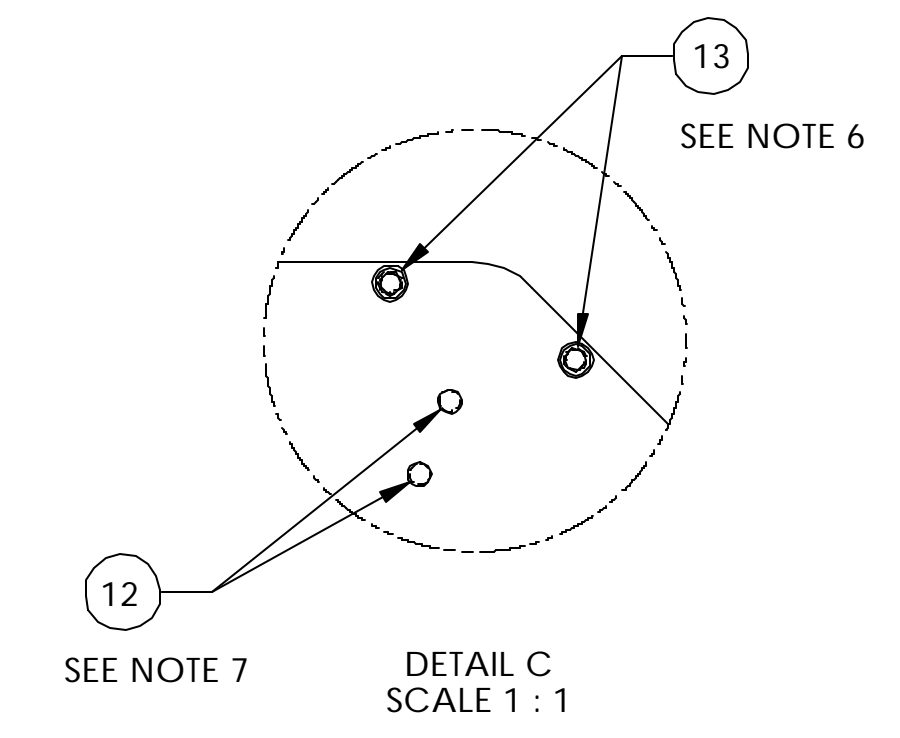
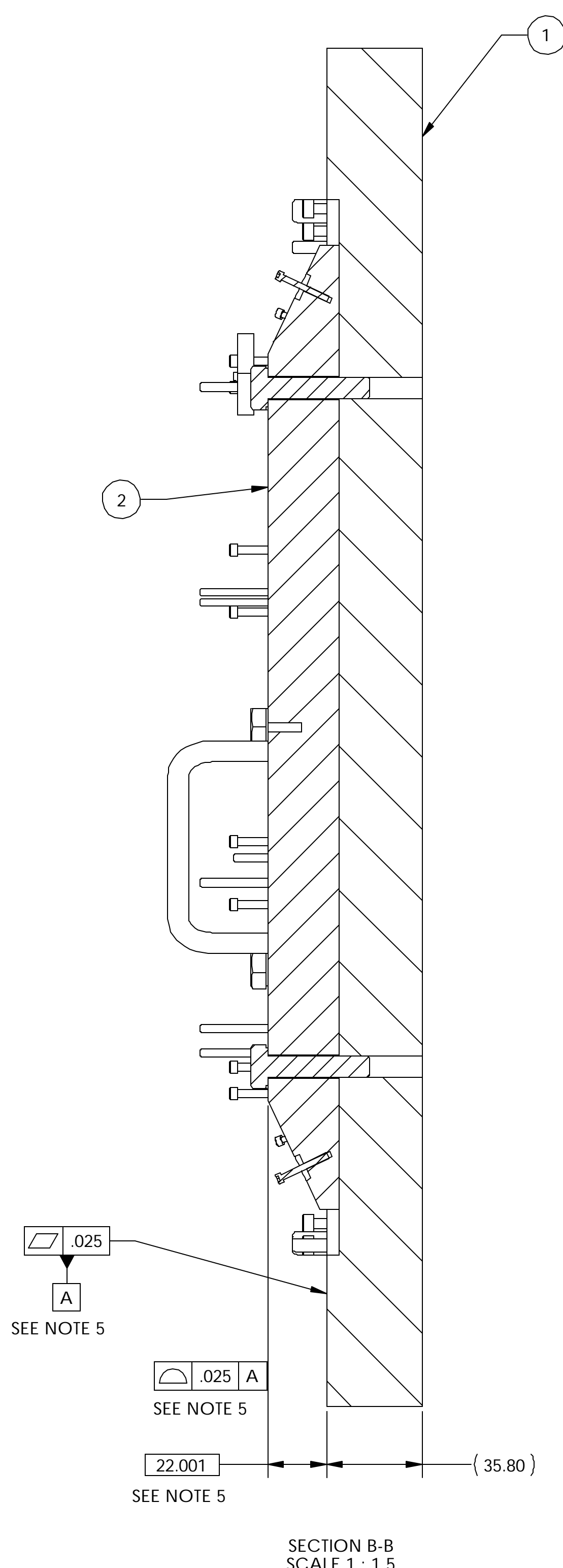
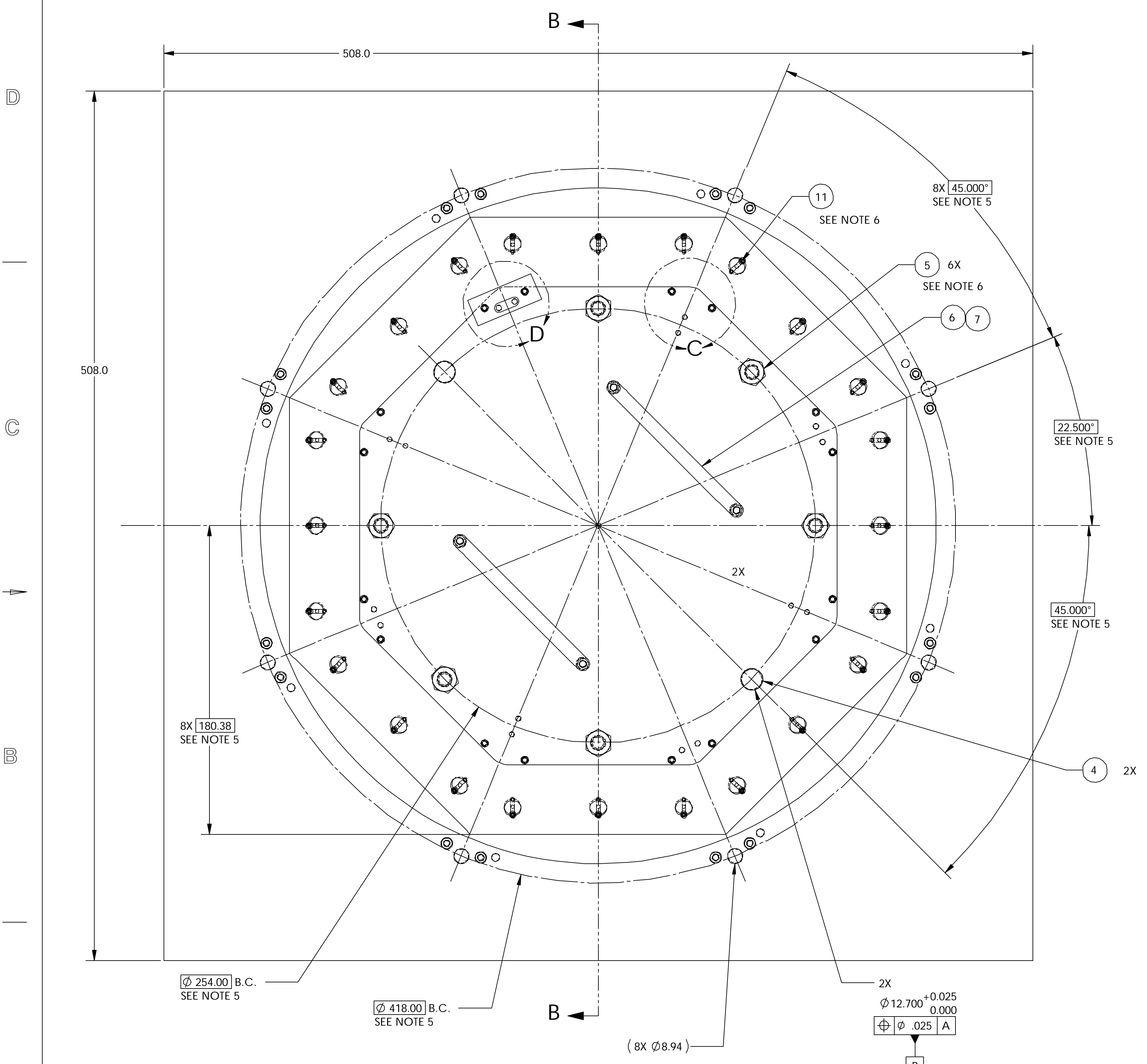
NOTES: UNLESS OTHERWISE SPECIFIED

- ALL DIMENSIONS IN MILLIMETERS
- DIMENSIONS AND TOLERANCING PER ASME Y14.5M-1994
- SURFACE TEXTURE PER ANI/ASME B 46.1-1985
- PARTS TO BE THOROUGHLY CLEAN FROM OIL, GREASE, DIRT AND CHIPS
- ALL TOLERANCES ARE REFERENCE; BASED UPON INDIVIDUAL PART TOLERANCES
- APPLY LESS THAN 1/3 RECOMMENDED TORQUE RATING FOR INDIVIDUAL SCREWS TO PREVENT PULLING HELICOILS OUT OF GRAPHITE
- INSERT PINS INTO HOLES TO 2X DIA. DEPTH ONLY TO ALLOW FOR EASY REMOVAL

UNLESS OTHERWISE SPECIFIED		SHOP ORDERS		SER. NO.		ERNEST ORLANDO LAWRENCE BERKELEY NATIONAL LABORATORY	
TOLERANCES	X.X ± 0.5	FRAC. ± 1/64	NO. REQD	DATE ISSD	UNIVERSITY OF CALIFORNIA - BERKELEY #		
	X.XX ± 0.25	ANGLES ± 30°	DEL TO	DATE REQD	ATLAS PIXEL DETECTOR SIDE "A" AND "C" ENDCONE BONDING FIXTURE		
	X.XXX ± 0.013	FINISH 1.6	SURFACE TREATMENT		MICROFILMED: DWG. TYPE ASSEM		
DO NOT SCALE PRINT		INDEX METHOD TAG		SCALE: 1:1.5		DO NOT SCALE PRINTS	
THREADS ARE CLASS 2		PROJECT NAME		CATEGORY CIDE		SHEET 1 OF 2	
CHAMFER ENDS OF ALL SCREW THREADS 30°		PROJECT US ATLAS SILICON SUBSYSTEM		DWG. NO. 21F745		SIZE	
CUT ROUNDS, 1.5 THREAD RELIEF ON MACHINED THREADS		DWG. W. K. MILLER		DATE 4/16/2002		REV.	
BREAK EDGES, .016 MAX. ON MACHINED WORK		CHK BILL WILDS		DATE 4/16/2002		DWG. NO. 21F746 4	
REMOVE BURS, WELD SPLATTER & LOOSE SCALE		BY E. ANDERSSSEN		DATE 4/16/2002		REV.	
IN ACCORDANCE WITH ASME Y14.5m & B46.1		APR		DATE 4/16/2002		REV.	
REV	DWG	CHK	ZONE	DATE	CHANGES		



DWG. NO. 21F746 4		SIZE =	REV. 2	SHEET NO. 2
ITEM	PART NO.	REQD.	DESCRIPTION	MATERIAL



NOTES: UNLESS OTHERWISE SPECIFIED

- ALL DIMENSIONS IN MILLIMETERS
- DIMENSIONS AND TOLERANCING PER ASME Y14.5M-1994
- SURFACE TEXTURE PER ANI/ASME B 46.1-1985
- PARTS TO BE THOROUGHLY CLEAN FROM OIL, GREASE, DIRT AND CHIPS
- ALL TOLERANCES ARE REFERENCE; BASED UPON INDIVIDUAL PART TOLERANCES
- APPLY LESS THAN 1/3 RECOMMENDED TORQUE RATING FOR INDIVIDUAL SCREWS TO PREVENT PULLING HELICOILS OUT OF GRAPHITE
- INSERT PINS INTO HOLES TO 2X DIA. DEPTH ONLY TO ALLOW FOR EASY REMOVAL

REV	DWG	CHK	ZONE	DATE	CHANGES

UNLESS OTHERWISE SPECIFIED		SHOP ORDERS	
TOLERANCES	X.X ± 0.5	FRAC.	± 1/64
	X.XX ± 0.25	ANGLES	± 30°
	X.XXX ± 0.013	FINISH	1.6
DO NOT SCALE PRINT		SURFACE TREATMENT	
THREADS ARE CLASS 2		PROJECT NO.	
CHAMFER ENDS OF ALL SCREW THREADS 30°		PROJECT NAME	
CUT ROUNDS, 1.5 THREAD RELIEF ON MACHINED THREADS		DATE	
BREAK EDGES, .016 MAX. ON MACHINED WORK		BY	
REMOVE BURS, WELD SPLATTER & LOOSE SCALE		DATE	
IN ACCORDANCE WITH ASME Y14.5m & B46.1		APR BY	

ERNEST ORLANDO LAWRENCE BERKELEY NATIONAL LABORATORY			
UNIVERSITY OF CALIFORNIA - BERKELEY #			
ATLAS PIXEL DETECTOR SIDE "A" AND "C" ENDCONE BONDING FIXTURE			
MICROFILMED:	DWG. TYPE	SHOWS ON	SCALE: 1:1.5
	ASSEM	21F745	DO NOT SCALE PRINTS
PATENT CLEAR:	DESIGN ACCT. NO.	CATEGORY CODE	DWG. NO.
	P1AP-11	AP6250	21F746 4
			SHEET 2 OF 2
			SIZE REV.