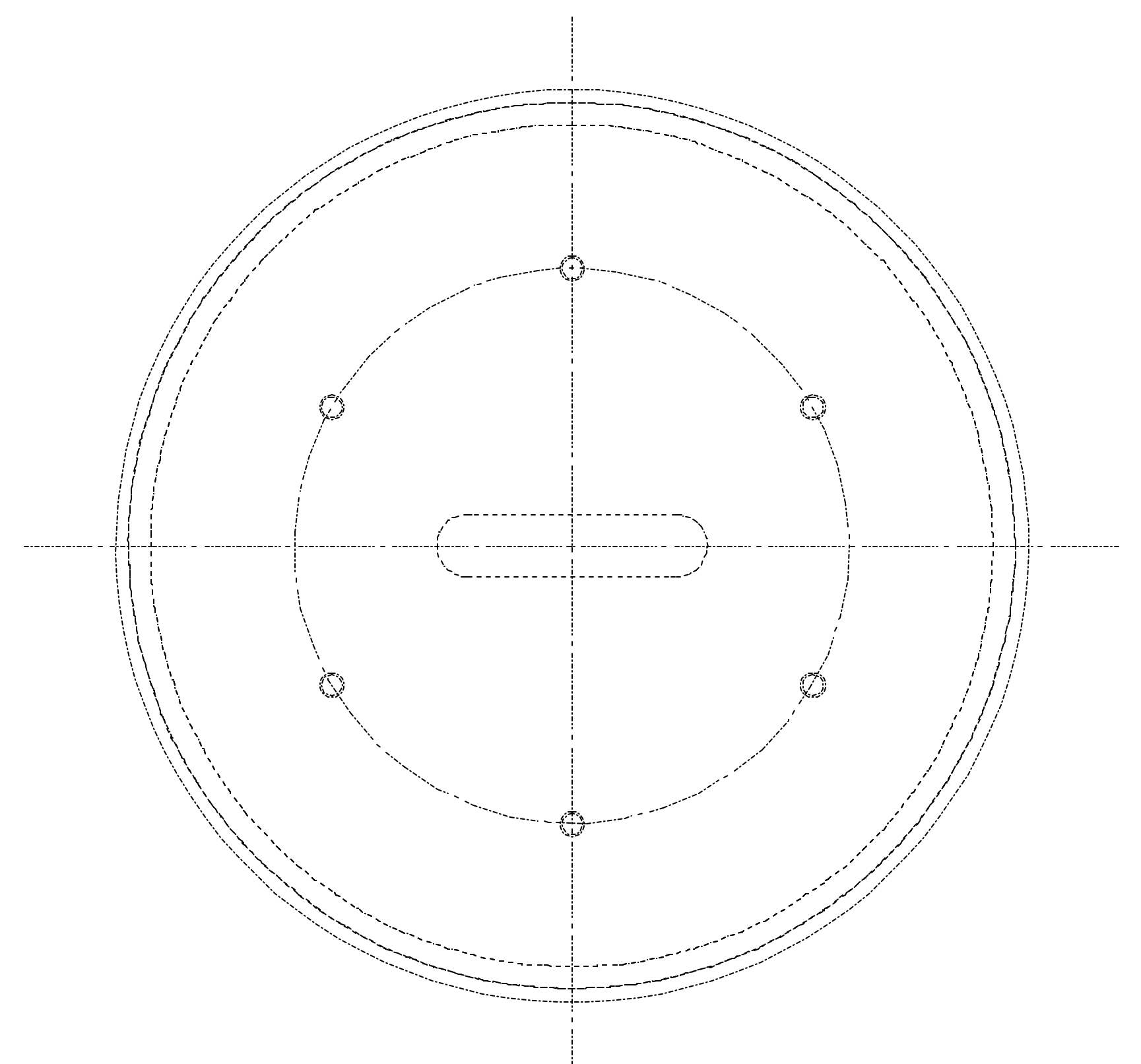
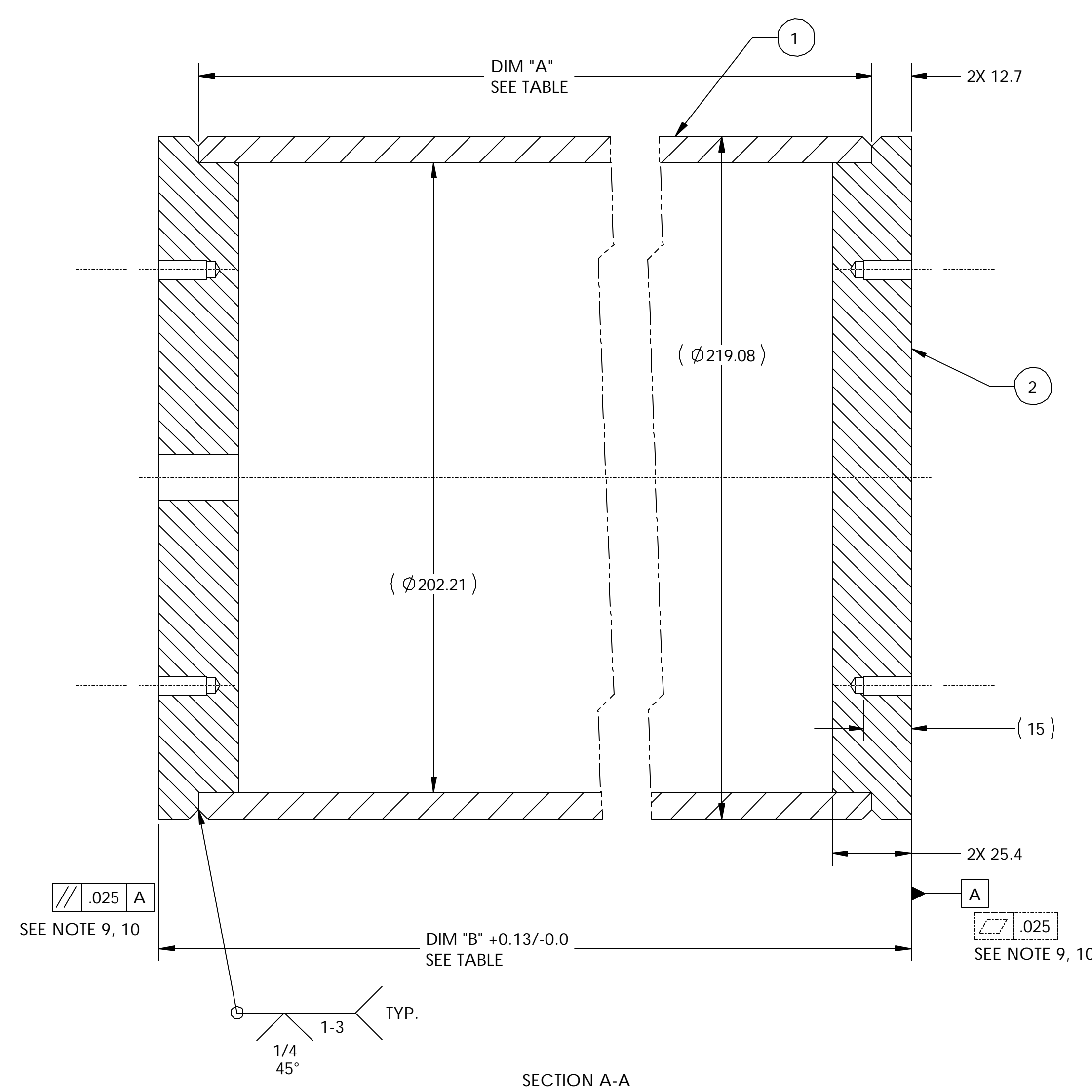
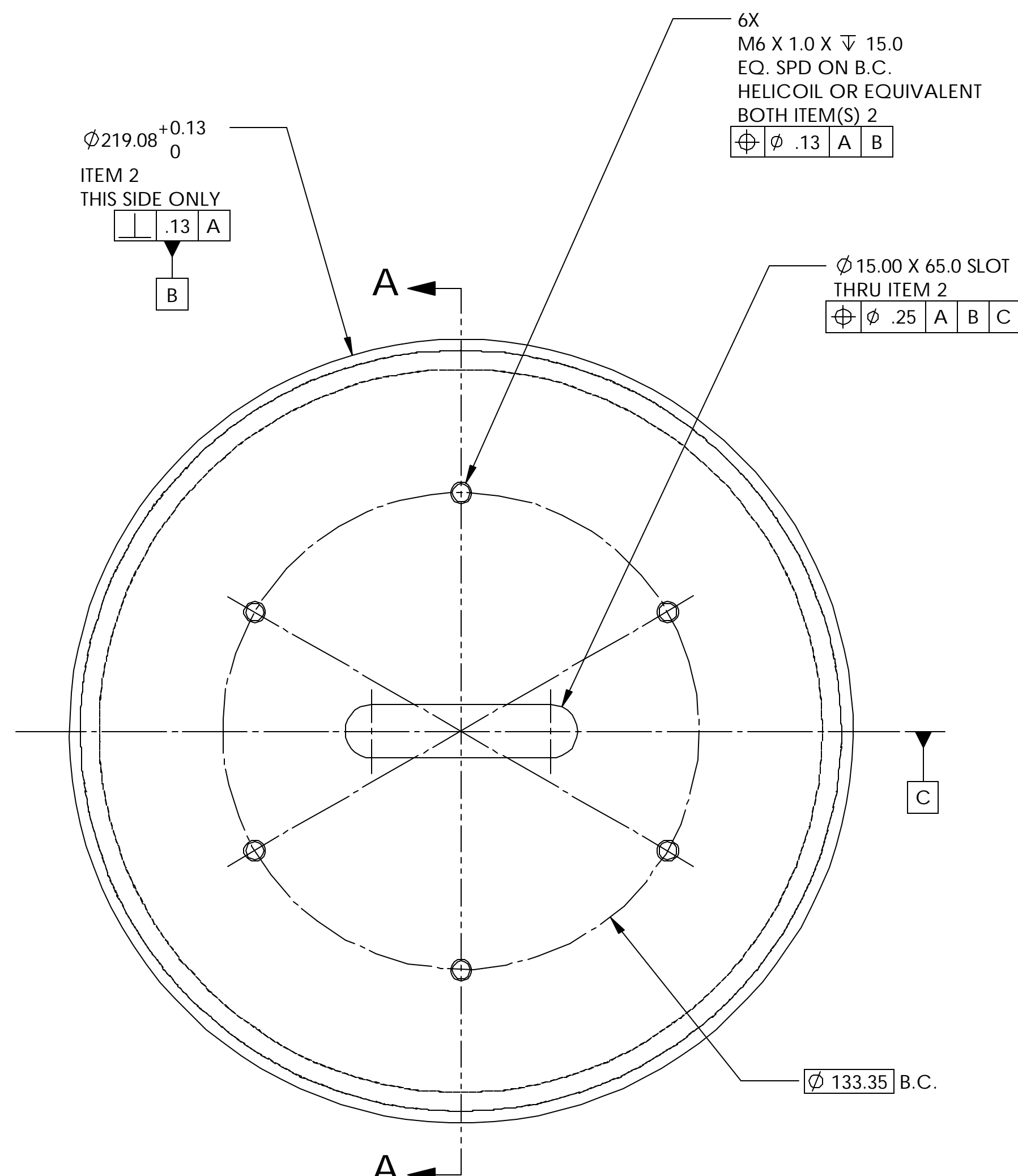


ITEM	PART NO.	REQD	DESCRIPTION	MATERIAL
2		2	TUBE SPACER END PLATE	6061-T6 ALUM
1		1	8.0" DIA. SCH 40 ALUM PIPE (.33 WALL) OR EQUIV.	6061-T6 ALUM



- NOTES: UNLESS OTHERWISE SPECIFIED
- ALL DIMENSIONS IN MILLIMETERS
 - DIMENSIONS AND TOLERANCING PER ASME Y14.5M-1994
 - SURFACE TEXTURE PER ANI/ASME B 46.1-1985
 - REMOVE ALL BURRS AND BREAK SHARP EDGES TO A MAXIMUM OF .38
 - ALL INSIDE CORNERS TO BE .38 RADIUS MAX
 - COUNTERSINK 82 DEGREES ALL TAPPED HOLES TO MAJOR DIAMETER
 - COUNTERSINK 82 DEGREES APPROXIMATELY .38 DEEP ALL DRILLED HOLES
 - PARTS TO BE THOROUGHLY CLEANED TO REMOVE ALL OIL, GREASE, DIRT AND CHIPS
 - STRESS RELIEVE PART @ 350 F FOR 6 HOURS
 - CMM INSPECTION REQUIRED; INSPECTION REPORTS PROVIDED TO HYTEC FOR REVIEW AND APPROVAL. INSPECTION TEMPERATURE MUST BE INDICATED

PART NO	DIM "A"	DIM "B"	ASSEMBLY
-689-1	241.20	266.600	END SECTION
-689-3	789.20	814.600	CENTRAL SECTION

REV	DWG	CHK	ZONE	DATE	CHANGES

UNLESS OTHERWISE SPECIFIED		SHOP ORDERS		SER. NO.
TOLERANCES	X.X ± 0.5	FRAC.	± 1/64	ACCT. NO.
	X.XX ± 0.25	ANGLES	± 30'	DATE ISSD
	X.XXX ± 0.013	FINISH	1.6	DATE REQD
THREADS ARE CLASS 2		CHAMFER ENDS OF ALL SCREW THREADS 30°		
CUT ROUNDS, 1.5 THREAD RELIEF ON MACHINED THREADS		BREAK EDGES, .016 MAX. ON MACHINED WORK		
REMOVE BURRS, WELD SPLATTER & LOOSE SCALE		IN ACCORDANCE WITH ASME Y14.5m & B46.1		

ERNEST ORLANDO LAWRENCE
BERKELEY NATIONAL LABORATORY
UNIVERSITY OF CALIFORNIA - BERKELEY #

ATLAS PIXEL DETECTOR
SPACEFRAME BOND FIXTURE
CENTRAL AND END SECTION SPACING TUBES

MICROFILMED: DWG. TYPE: ASSEM
SHOWS ON: 21F688
SCALE: 1:1.25
DO NOT SCALE PRINTS

DATE: 4/16/2002
DATE: 4/16/2002
DATE: 4/16/2002

DESIGN ACCT. NO.: P1AP-11
CATEGORY CODE: AP6250
DWG. NO.: 21F6894
SIZE: 1 OF 1
REV.: